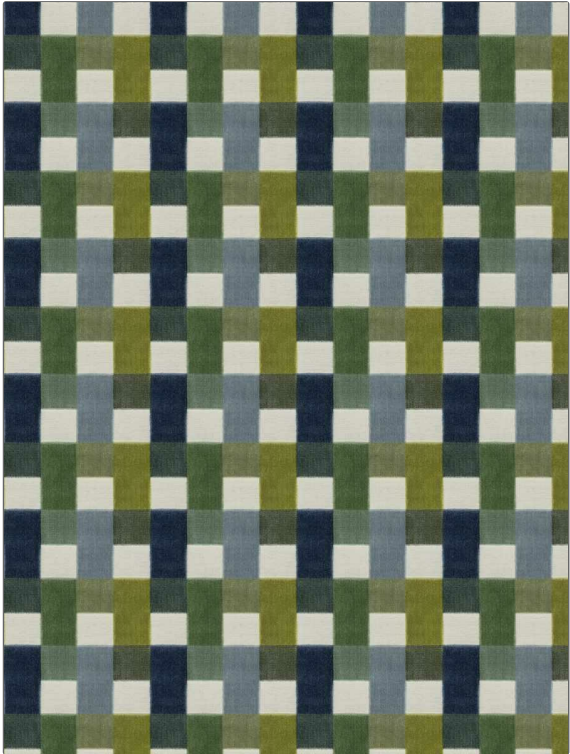


Fabric Product Details

PATTERN Aldora Velvet
COLOR Tahiti

BRAND	APPLICATION
Stroheim	Fabric
USES	CATEGORIES
Upholstery	Velvet / Grospoint, Wovens
BOOK	COLORS
Color Vol. II Oceanside / Tahiti	Blue, Light Blue, Light Green
DESIGN TYPES	SCALE
Geometric, Check / Plaid, Contemporary / Modern	Medium
RAILROADED	
Not Railroaded	



WIDTH	VERTICAL REPEAT	HORIZONTAL REPEAT	CONTENT
57.00 in (144.78 cm)	6.50 in (16.51 cm)	7.00 in (17.78 cm)	68% Viscose, 32% Polyester
BACKING	FIRE CODES	DOUBLE RUBS	PRODUCT NUMBER
100% Acrylic Backing	UFAC Class I / NFPA 260	Exceeds 30,000 Double Rubs (Wyzenbeek Method)	1384601
DATE BOOKED	COUNTRY	CLEANING CODES	
05/2023	India	S	

ADDITIONAL PRODUCT NOTES
 Ca Tb 117-2013, 100% Acrylic Backing, Exclusive Pattern