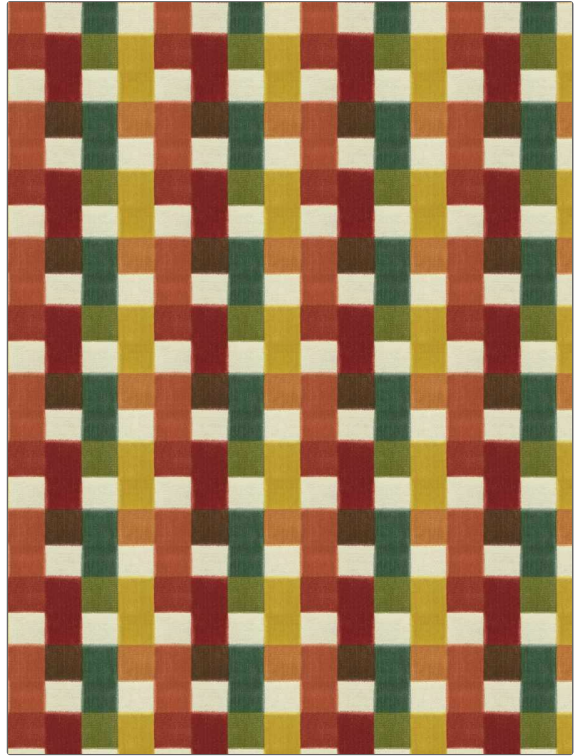


# Fabric Product Details

<b>PATTERN</b>	<b>Aldora Velvet</b>
<b>COLOR</b>	<b>Hibiscus</b>
<b>BRAND</b>	<b>APPLICATION</b>
<b>Stroheim</b>	<b>Fabric</b>
<b>USES</b>	<b>CATEGORIES</b>
<b>Upholstery</b>	<b>Velvet / Grospoint, Wovens</b>
<b>BOOK</b>	<b>COLORS</b>
<b>Color Vol. II Starfish / Hibiscus</b>	<b>Yellow, Pink, Red, Multi-Color</b>
<b>DESIGN TYPES</b>	<b>SCALE</b>
<b>Geometric, Check / Plaid, Contemporary / Modern</b>	<b>Medium</b>
<b>RAILROADED</b>	
<b>Not Railroaded</b>	



<b>WIDTH</b>	<b>VERTICAL REPEAT</b>	<b>HORIZONTAL REPEAT</b>	<b>CONTENT</b>
<b>57.00 in (144.78 cm)</b>	<b>6.50 in (16.51 cm)</b>	<b>7.00 in (17.78 cm)</b>	<b>68% Viscose, 32% Polyester</b>
<b>BACKING</b>	<b>FIRE CODES</b>	<b>DOUBLE RUBS</b>	<b>PRODUCT NUMBER</b>
<b>100% Acrylic Backing</b>	<b>UFAC Class I / NFPA 260</b>	<b>Exceeds 30,000 Double Rubs (Wyzenbeek Method)</b>	<b>1384602</b>
<b>DATE BOOKED</b>	<b>COUNTRY</b>	<b>CLEANING CODES</b>	
<b>05/2023</b>	<b>India</b>	<b>S</b>	

<b>ADDITIONAL PRODUCT NOTES</b>
<b>Ca Tb 117-2013, 100% Acrylic Backing, Exclusive Pattern</b>