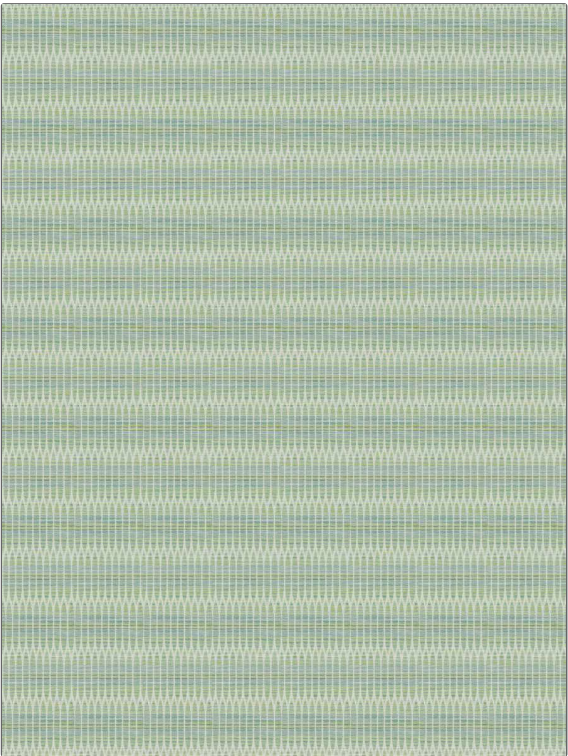


Fabric Product Details

| | |
|---|--|
| PATTERN | Shindig |
| COLOR | Aloe |
| BRAND | APPLICATION |
| Stroheim | Fabric |
| USES | CATEGORIES |
| Upholstery | Bella - Dura, Outdoor, Easy To Clean, Wovens |
| BOOK | COLORS |
| Color Indoor / Outdoor | Aqua / Teal, Light Green |
| DESIGN TYPES | SCALE |
| Global / Ethnic, Small Scale Woven, Contemporary / Modern, Abstract, Dots / Circles | Small |
| RAILROADED | |
| Not Railroaded | |



| | | | |
|--------------------------------------|-----------------|--|--|
| WIDTH | FINISH | VERTICAL REPEAT | HORIZONTAL REPEAT |
| 54.00 in (137.16 cm) | Water Resistant | 4.75 in (12.06 cm) | 0.38 in (0.97 cm) |
| CONTENT | BACKING | FIRE CODES | DOUBLE RUBS |
| 94% High UV Polyester, 6% Polyolefin | | Does Not Contain FR Chemicals, UFAC Class I / NFPA 260 | Exceeds 100,000 Double Rubs (Wyzenbeek Method) |
| PRODUCT NUMBER | DATE BOOKED | COUNTRY | CLEANING CODES |
| 1387005 | 05/2023 | USA | WS, BLEACH CLEANABLE |

| |
|---|
| ADDITIONAL PRODUCT NOTES |
| Water Resistant, Soil & Stain Repellent Finish, Pfas-Free, Bella Dura Home, Easy To Clean Finish, 1,000 Hours Light Fastness, Indoor / Outdoor, Ca Tb 117-2013, Bleach Cleanable, Exclusive Pattern |