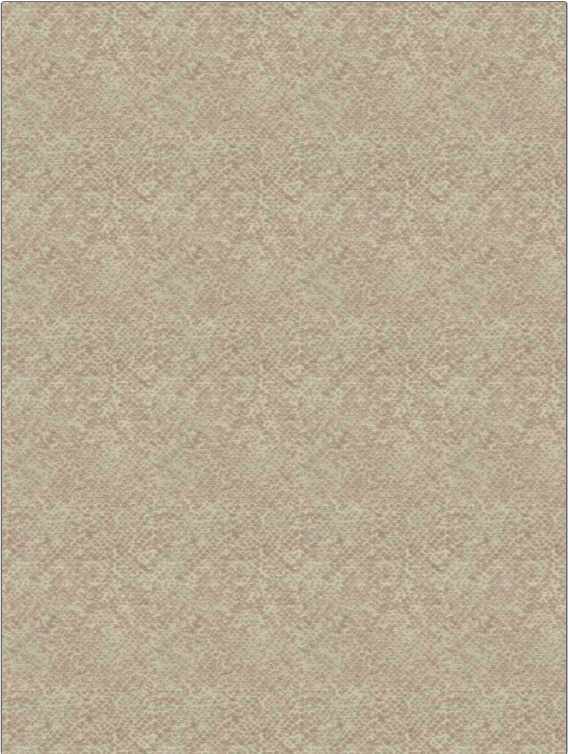


# Fabric Product Details

**PATTERN** **Samaria**  
**COLOR** **Rosewood**

<b>BRAND</b>	<b>APPLICATION</b>
<b>Stroheim</b>	<b>Fabric</b>
<b>USES</b>	<b>CATEGORIES</b>
<b>Upholstery</b>	<b>Velvet / Grospoint</b>
<b>BOOK</b>	<b>COLORS</b>
<b>Ambiance (3 Books) Rosewood / Whisper</b>	<b>White</b>
<b>DESIGN TYPES</b>	<b>SCALE</b>
<b>Animal, Dots / Circles</b>	<b>Small</b>
<b>RAILROADED</b>	
<b>Not Railroaded</b>	



<b>WIDTH</b>	<b>VERTICAL REPEAT</b>	<b>HORIZONTAL REPEAT</b>	<b>CONTENT</b>
<b>56.00 in (142.24 cm)</b>	<b>9.00 in (22.86 cm)</b>	<b>7.00 in (17.78 cm)</b>	<b>52% Polyester, 48% Viscose</b>
<b>BACKING</b>	<b>FIRE CODES</b>	<b>DOUBLE RUBS</b>	<b>PRODUCT NUMBER</b>
<b>100% Latex Backing</b>	<b>UFAC Class I / NFPA 260</b>	<b>Exceeds 12,000 Double Rubs (Wyzenbeek Method)</b>	<b>1579104</b>
<b>DATE BOOKED</b>	<b>COUNTRY</b>	<b>CLEANING CODES</b>	
<b>02/2024</b>	<b>India</b>	<b>S</b>	

**ADDITIONAL PRODUCT NOTES**  
**Ca Tb 117-2013, 100% Latex Backing, Exclusive Pattern**