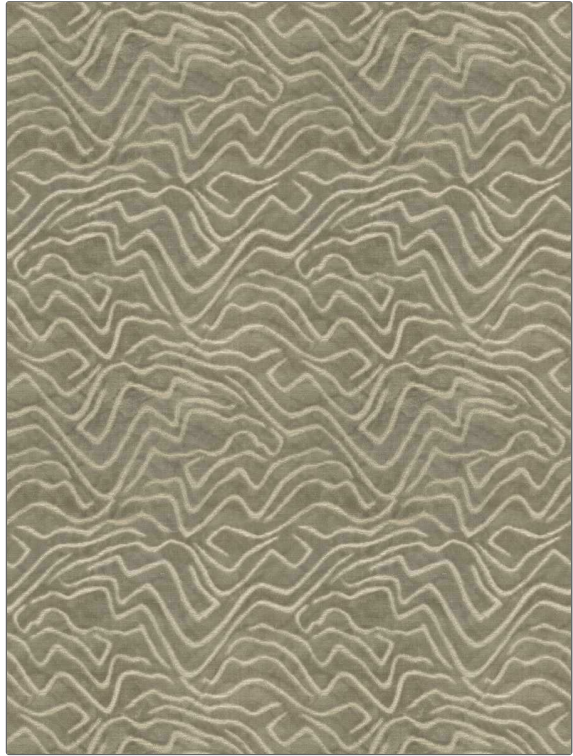


Fabric Product Details

PATTERN Raffaella
COLOR Natural

BRAND	APPLICATION
Stroheim	Fabric
USES	CATEGORIES
Upholstery	Velvet / Grospoint
BOOK	COLORS
Ambiance (3 Books) Lava Stone / Natural	Taupe / Tan
DESIGN TYPES	SCALE
Global / Ethnic, Contemporary / Modern, Abstract	Medium
RAILROADED	
Not Railroaded	



WIDTH	VERTICAL REPEAT	HORIZONTAL REPEAT	CONTENT
54.00 in (137.16 cm)	16.75 in (42.54 cm)	13.50 in (34.29 cm)	54% Viscose, 46% Polyester
BACKING	FIRE CODES	DOUBLE RUBS	PRODUCT NUMBER
100% Latex Backing	UFAC Class I / NFPA 260	Exceeds 30,000 Double Rubs (Wyzenbeek Method)	1579301
DATE BOOKED	COUNTRY	CLEANING CODES	
02/2024	India	S	

ADDITIONAL PRODUCT NOTES
Ca Tb 117-2013, 100% Latex Backing, Exclusive Pattern