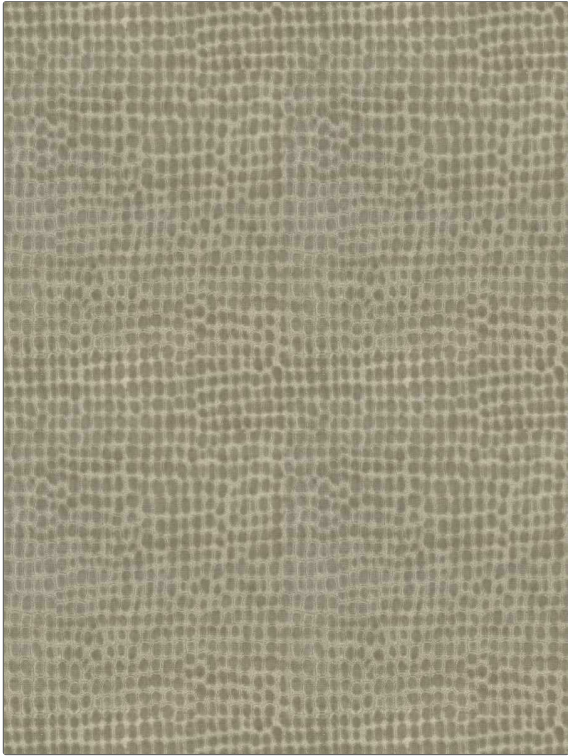


Fabric Product Details

PATTERN Adriel
COLOR Natural

BRAND	APPLICATION
Stroheim	Fabric
USES	CATEGORIES
Upholstery	Velvet / Grospoint, Wovens
BOOK	COLORS
Ambiance (3 Books) Lava Stone / Natural	Taupe / Tan, Linen
DESIGN TYPES	SCALE
Small Scale Woven, Contemporary / Modern, Dots / Circles	Small
RAILROADED	
Not Railroaded	



WIDTH	VERTICAL REPEAT	HORIZONTAL REPEAT	CONTENT
54.00 in (137.16 cm)	16.75 in (42.54 cm)	13.50 in (34.29 cm)	60% Viscose, 25% Cotton, 15% Polyester
BACKING	FIRE CODES	DOUBLE RUBS	PRODUCT NUMBER
100% Latex Backing	UFAC Class I / NFPA 260	Exceeds 30,000 Double Rubs (Wyzenbeek Method)	1590603
DATE BOOKED	COUNTRY	CLEANING CODES	
02/2024	India	S	

ADDITIONAL PRODUCT NOTES
Ca Tb 117-2013, 100% Latex Backing, Exclusive Pattern