

## Fabric Product Details

**PATTERN** Dafne  
**COLOR** Lava Stone

**BRAND**

**Stroheim**

**APPLICATION**

**Fabric**

**USES**

**Bedding, Drapery**

**CATEGORIES**

**Crewels / Embroideries**

**BOOK**

**Ambiance (3 Books) Lava Stone / Natural**

**COLORS**

**Taupe / Tan, Linen**

**DESIGN TYPES**

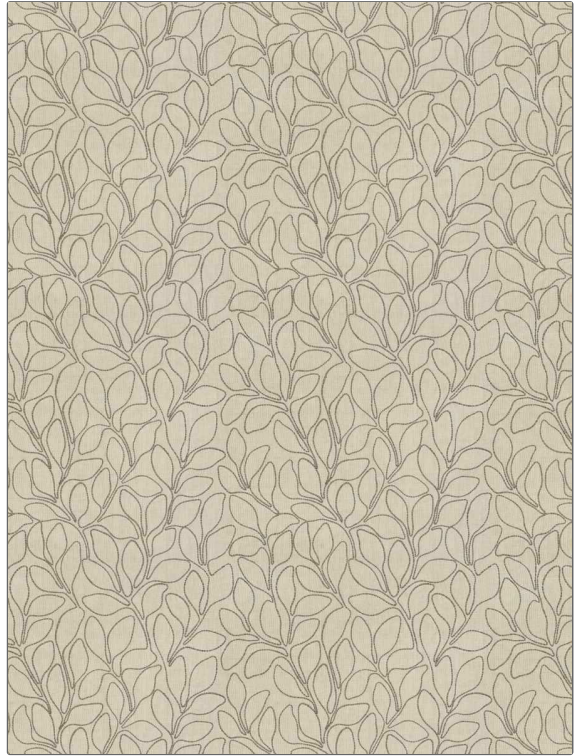
**Embroidery, Leaves, Tropical / Botanical**

**SCALE**

**Medium**

**RAILROADED**

**Not Railroaded**



**WIDTH**

**52.00 in (132.08 cm)**

**VERTICAL REPEAT**

**23.25 in (59.06 cm)**

**HORIZONTAL REPEAT**

**25.50 in (64.77 cm)**

**CONTENT**

**Embroidery: 75% Jute, 15% Polyester, 10% Viscose, Base: 100% Linen**

**BACKING**

**DOUBLE RUBS**

**Exceeds 6,000 Double Rubs (Wyzenbeek Method)**

**PRODUCT NUMBER**

**1592203**

**DATE BOOKED**

**02/2024**

**COUNTRY**

**India**

**CLEANING CODES**

**S**

**ADDITIONAL PRODUCT NOTES**

**Ca Tb 117-2013, Exclusive Pattern, Embroidered Textiles Are Not, Guaranteed For Precise Color, Matching And Colorfastness., Color Placement Of Embroidery, May Vary. All Measurements, Quoted For Repeats Are, Approximate.**