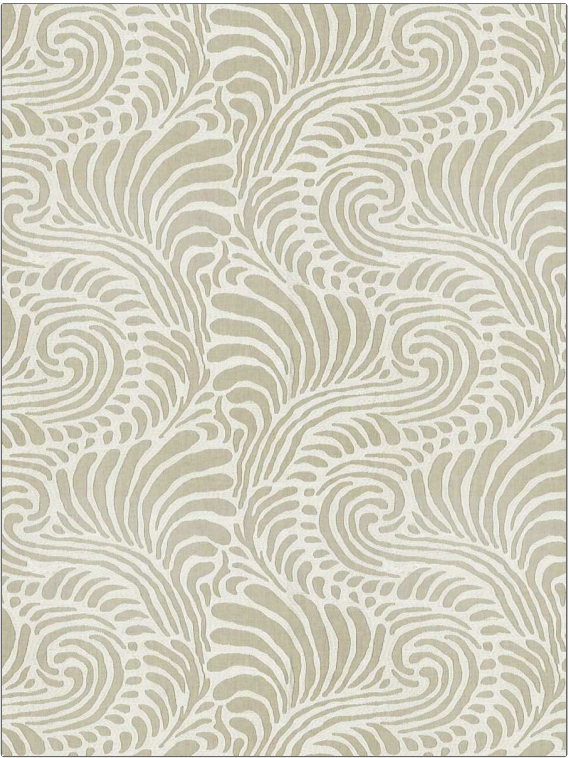


Fabric Product Details

PATTERN	Karalana
COLOR	Natural
BRAND	APPLICATION
Stroheim	Fabric
USES	CATEGORIES
Bedding, Drapery	Crewels / Embroideries
BOOK	COLORS
Ambiance (3 Books) Lava Stone / Natural	Beige, Linen, Off White / Ivory
DESIGN TYPES	SCALE
Embroidery, Scrollwork	Large
RAILOADED	
Not Railroaded	



WIDTH	VERTICAL REPEAT	HORIZONTAL REPEAT	CONTENT
53.00 in (134.62 cm)	15.00 in (38.10 cm)	17.00 in (43.18 cm)	Embroidery: 100% Viscose, Base: 55% Linen, 45% Cotton
BACKING	PRODUCT NUMBER	DATE BOOKED	COUNTRY
	1602602	02/2024	India
CLEANING CODES			
S			

ADDITIONAL PRODUCT NOTES
Exclusive Pattern, Embroidered Textiles Are Not, Guaranteed For Precise Color, Matching And Colorfastness., Color Placement Of Embroidery, May Vary. All Measurements, Quoted For Repeats Are, Approximate.