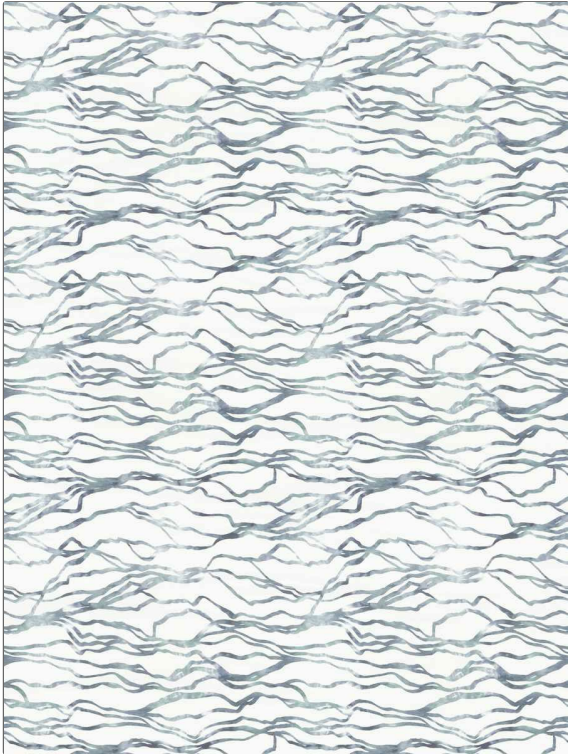


Fabric Product Details

| | |
|---------------------------------------------------|--------------------------------|
| PATTERN | Nala |
| COLOR | Waterfall |
| BRAND | APPLICATION |
| Stroheim | Fabric |
| USES | CATEGORIES |
| Bedding, Drapery, Multipurpose, Upholstery | Prints, Linen |
| BOOK | COLORS |
| Ambiance (3 Books) Galaxy / Waterfall | Light Blue, Aqua / Teal |
| DESIGN TYPES | SCALE |
| Print Pattern, Contemporary / Modern | Medium |
| RAILOADED | |
| Not Railed | |



| | | | |
|-----------------------------|--------------------------------|------------------------------------------------------|------------------------------|
| WIDTH | VERTICAL REPEAT | HORIZONTAL REPEAT | CONTENT |
| 59.00 in (149.86 cm) | 26.75 in (67.94 cm) | 26.75 in (67.94 cm) | 60% Cotton, 40% Linen |
| BACKING | FIRE CODES | DOUBLE RUBS | PRODUCT NUMBER |
| | UFAC Class I / NFPA 260 | Exceeds 36,000 Double Rubs (Wyzenbeek Method) | 1605302 |
| DATE BOOKED | COUNTRY | CLEANING CODES | |
| 02/2024 | Austria | S | |

| |
|------------------------------------------------------------------------|
| ADDITIONAL PRODUCT NOTES |
| Passes 14,000 Martindale Tst, Ca Tb 117-2013, Exclusive Pattern |