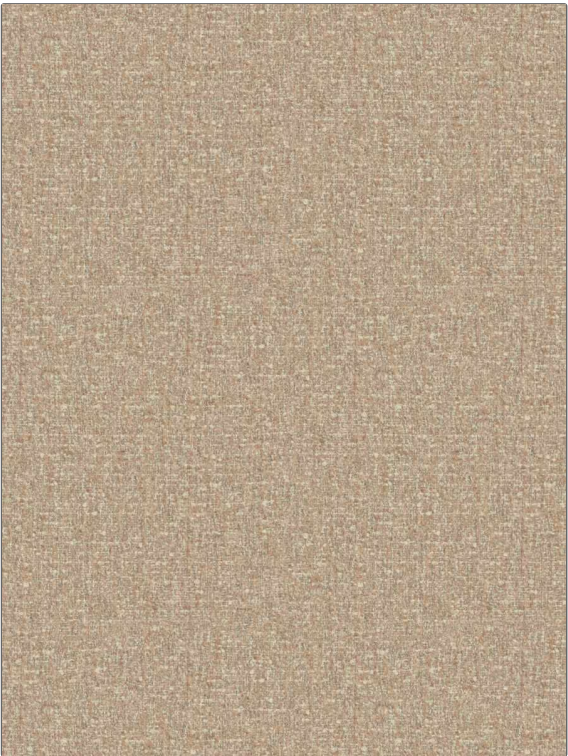


Fabric Product Details

PATTERN	Rafe
COLOR	Rosewood

BRAND	APPLICATION
Stroheim	Fabric
USES	CATEGORIES
Upholstery	Wovens, Solids / Small Scale Patterns
BOOK	COLORS
Ambiance (3 Books) Rosewood / Whisper	Coral / Peach, Pink
DESIGN TYPES	SCALE
Small Scale Woven, Solid, Texture Plain	Small
RAILROADED	
Not Railroaded	



WIDTH	VERTICAL REPEAT	HORIZONTAL REPEAT	CONTENT
54.00 in (137.16 cm)	0.00 in (0.00 cm)	0.00 in (0.00 cm)	51% Linen, 44% Viscose, 4% Cotton, 1% Polyester
BACKING	FIRE CODES	DOUBLE RUBS	PRODUCT NUMBER
	UFAC Class I / NFPA 260	Exceeds 36,000 Double Rubs (Wyzenbeek Method)	1718701
DATE BOOKED	COUNTRY	CLEANING CODES	
02/2024	Turkey	S	

ADDITIONAL PRODUCT NOTES
Passes 21,000 Martindale Tst, Exclusive Pattern