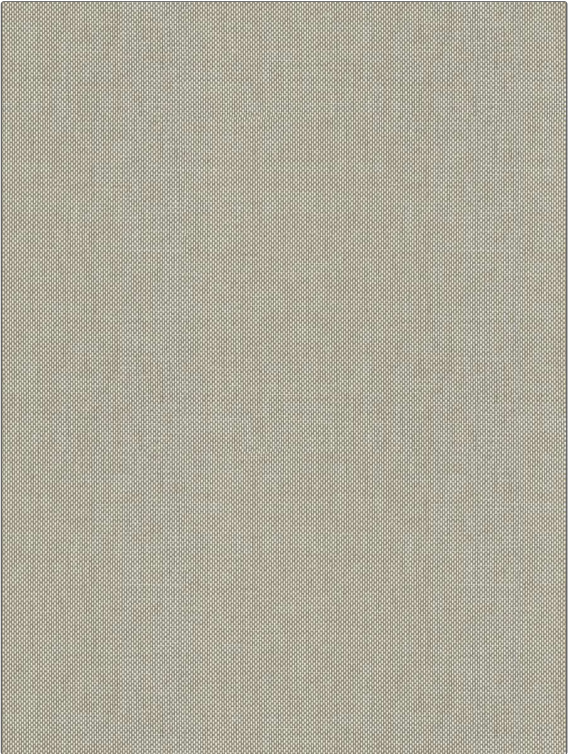


# Fabric Product Details

**PATTERN** Positano Raffia  
**COLOR** Almond

<b>BRAND</b>	<b>APPLICATION</b>
Stroheim	Fabric
<b>USES</b>	<b>CATEGORIES</b>
Upholstery	Raffia, Wovens, Solids / Small Scale Patterns
<b>BOOK</b>	<b>COLORS</b>
Positano Raffia	Taupe / Tan, Linen
<b>DESIGN TYPES</b>	<b>SCALE</b>
Small Scale Woven, Solid, Texture Plain	Small
<b>RAILROADED</b>	
Not Railroaded	



<b>WIDTH</b>	<b>VERTICAL REPEAT</b>	<b>HORIZONTAL REPEAT</b>	<b>CONTENT</b>
54.00 in (137.16 cm)	0.00 in (0.00 cm)	0.00 in (0.00 cm)	48% Polyester, 29% Cotton, 23% Nylon
<b>BACKING</b>	<b>FIRE CODES</b>	<b>DOUBLE RUBS</b>	<b>PRODUCT NUMBER</b>
	UFAC Class I / NFPA 260	Exceeds 42,000 Double Rubs (Wyzenbeek Method)	1875906
<b>DATE BOOKED</b>	<b>COUNTRY</b>	<b>CLEANING CODES</b>	
02/2024	India	S	

**ADDITIONAL PRODUCT NOTES**  
 Ca Tb 117-2013, Exclusive Pattern