

# Fabric Product Details

**PATTERN** Od-Palima  
**COLOR** Tahiti

**BRAND**

**Stroheim**

**APPLICATION**

**Fabric**

**USES**

**Drapery, Multipurpose, Upholstery**

**CATEGORIES**

**Outdoor, Prints**

**BOOK**

**Indoor / Outdoor Prints**

**COLORS**

**Blue, Green, Aqua / Teal, Light Green**

**DESIGN TYPES**

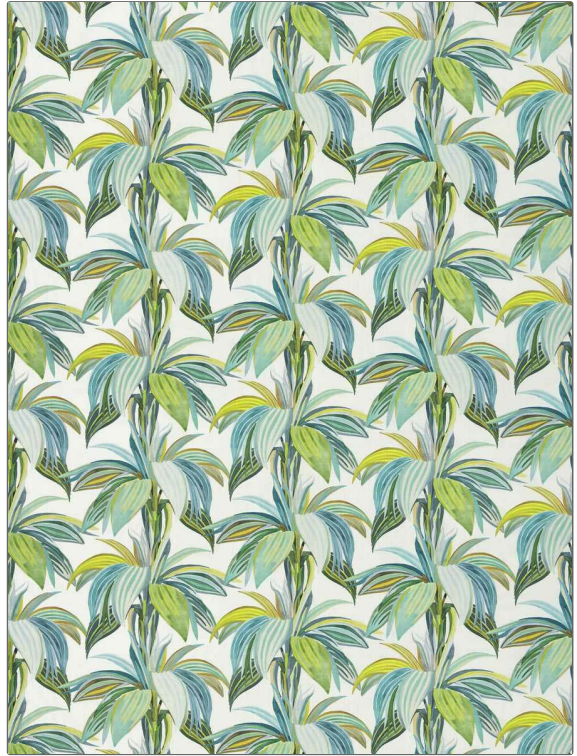
**Leaves, Print Pattern, Tropical / Botanical, Contemporary / Modern**

**SCALE**

**Large**

**RAILROADED**

**Not Railroaded**



**WIDTH**

**55.00 in (139.70 cm)**

**FINISH**

**Water Repellent Finish**

**VERTICAL REPEAT**

**20.00 in (50.80 cm)**

**HORIZONTAL REPEAT**

**27.00 in (68.58 cm)**

**CONTENT**

**100% Polyester**

**BACKING**

**FIRE CODES**

**UFAC Class I / NFPA 260**

**DOUBLE RUBS**

**Exceeds 72,000 Double Rubs (Wyzenbeek Method)**

**PRODUCT NUMBER**

**1955201**

**DATE BOOKED**

**02/2024**

**COUNTRY**

**Austria**

**CLEANING CODES**

**S**

**ADDITIONAL PRODUCT NOTES**

**Water Repellent Finish, Passes 50,000 Martindale Tst, Indoor / Outdoor, Ca Tb 117-2013, Exclusive Pattern**