

Fabric Product Details

PATTERN **OD-Brush Petal**  
COLOR **Oceanside**

BRAND

**Stroheim**

APPLICATION

**Fabric**

USES

**Drapery, Multipurpose,  
Upholstery**

CATEGORIES

**Outdoor, Prints**

BOOK

**Indoor / Outdoor Prints**

COLORS

**Blue, Light Blue**

DESIGN TYPES

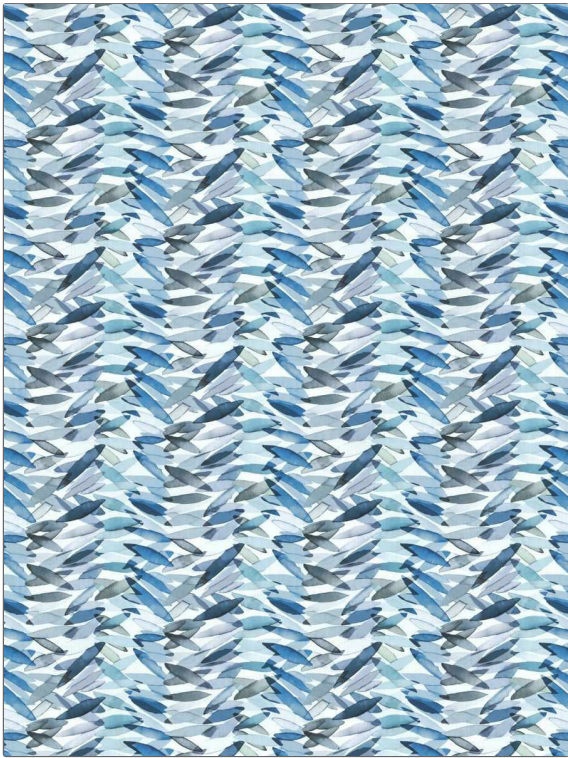
**Floral, Leaves, Print  
Pattern, Tropical /  
Botanical**

SCALE

**Medium**

RAILROADED

**Not Railroaded**



WIDTH

**55.00 in (139.70 cm)**

FINISH

**Water Repellent Finish**

VERTICAL REPEAT

**19.50 in (49.53 cm)**

HORIZONTAL REPEAT

**13.50 in (34.29 cm)**

CONTENT

**100% Polyester**

BACKING

FIRE CODES

**UFAC Class I / NFPA 260**

DOUBLE RUBS

**Exceeds 72,000 Double  
Rubs (Wyzenbeek Method)**

PRODUCT NUMBER

**1956001**

DATE BOOKED

**02/2024**

COUNTRY

**Austria**

CLEANING CODES

**S**

ADDITIONAL PRODUCT NOTES

**Water Repellent Finish, Easy To Clean Finish, Passes 50,000 Martindale Tst, Indoor / Covered Outdoor, Ca Tb 117-2013,  
Exclusive Pattern**