

Fabric Product Details

PATTERN Partheneon
COLOR Coconut

BRAND

Stroheim

APPLICATION

Fabric

USES

Drapery

CATEGORIES

Sheer

BOOK

Ambiance Narrow Sheers (2 Books) Moonbean / Biscotti

COLORS

White, Off White / Ivory

DESIGN TYPES

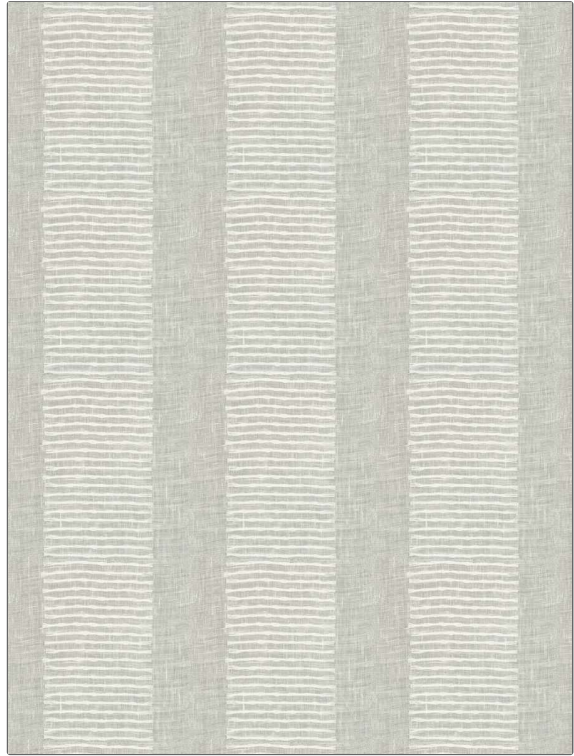
Embroidery, Stripes, Contemporary / Modern

SCALE

Medium

RAILROADED

Not Railroaded



WIDTH

55.00 in (139.70 cm)

VERTICAL REPEAT

0.00 in (0.00 cm)

HORIZONTAL REPEAT

8.75 in (22.22 cm)

CONTENT

70% Linen, 30% Cotton

BACKING

PRODUCT NUMBER

1962605

DATE BOOKED

06/2024

COUNTRY

India

CLEANING CODES

S

ADDITIONAL PRODUCT NOTES

Exclusive Pattern