

Fabric Product Details

PATTERN Kallista
COLOR Shell

BRAND

Stroheim

APPLICATION

Fabric

USES

Drapery

CATEGORIES

Sheer, Prints, Crewels / Embroideries

BOOK

Ambiance Narrow Sheers (2 Books) Twilight / Shell

COLORS

Taupe / Tan, Pink

DESIGN TYPES

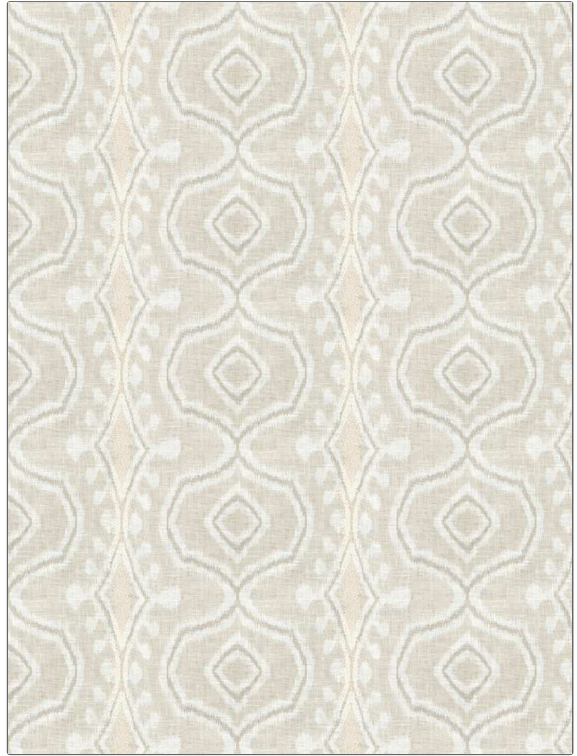
Embroidery, Global / Ethnic, Print Pattern

SCALE

Large

RAILROADED

Not Railroaded



WIDTH

51.00 in (129.54 cm)

VERTICAL REPEAT

8.50 in (21.59 cm)

HORIZONTAL REPEAT

11.00 in (27.94 cm)

CONTENT

Embroidery: 100% Viscose, Base: 100% Linen

BACKING

PRODUCT NUMBER

1964201

DATE BOOKED

06/2024

COUNTRY

India

CLEANING CODES

S

ADDITIONAL PRODUCT NOTES

Exclusive Pattern, Embroidered Textiles Are Not, Guaranteed For Precise Color, Matching And Colorfastness., Color Placement Of Embroidery, May Vary. All Measurements, Quoted For Repeats Are, Approximate.