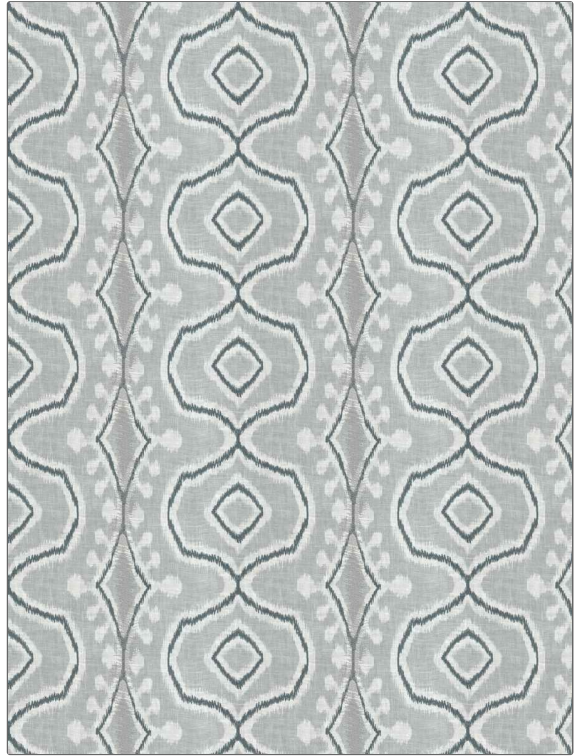


Fabric Product Details

PATTERN Kallista
COLOR 02

BRAND	APPLICATION
Stroheim	Fabric
USES	CATEGORIES
Drapery	Sheer, Prints, Crewels / Embroideries
COLORS	DESIGN TYPES
Blue, Light Blue	Embroidery, Global / Ethnic, Print Pattern
SCALE	RAILROADED
Large	Not Railroaded



WIDTH	VERTICAL REPEAT	HORIZONTAL REPEAT	CONTENT
51.00 in (129.54 cm)	8.50 in (21.59 cm)	11.00 in (27.94 cm)	Embroidery: 100% Viscose, Base: 100% Linen
BACKING	PRODUCT NUMBER	COUNTRY	CLEANING CODES
	1964602	India	S

ADDITIONAL PRODUCT NOTES

Exclusive Pattern, Embroidered Textiles Are Not, Guaranteed For Precise Color, Matching And Colorfastness., Color Placement Of Embroidery, May Vary. All Measurements, Quoted For Repeats Are, Approximate.