

Fabric Product Details

PATTERN Ariadne
COLOR Chrome

BRAND

Stroheim

APPLICATION

Fabric

USES

Drapery

CATEGORIES

Sheer

BOOK

Ambiance Narrow Sheers (2 Books) Moonbean / Biscotti

COLORS

Taupe / Tan, Linen, Metallic

DESIGN TYPES

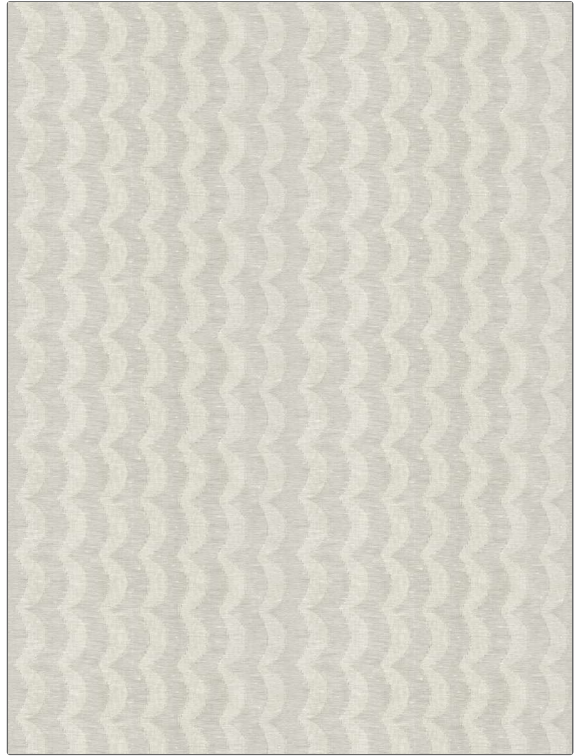
Geometric, Jacquard Pattern, Stripes, Contemporary / Modern, Bargello

SCALE

Medium

RAILOADED

Not Railroaded



WIDTH

54.00 in (137.16 cm)

VERTICAL REPEAT

5.00 in (12.70 cm)

HORIZONTAL REPEAT

13.50 in (34.29 cm)

CONTENT

47% Cotton, 44% Linen, 9% Zari

BACKING

PRODUCT NUMBER

1967802

DATE BOOKED

06/2024

COUNTRY

India

CLEANING CODES

S

ADDITIONAL PRODUCT NOTES

Exclusive Pattern