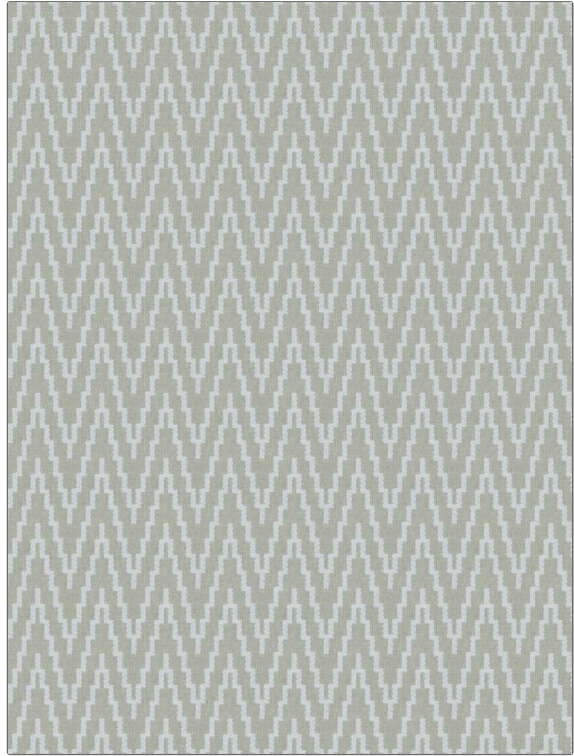


Fabric Product Details

PATTERN **Esperanza**
COLOR **102**

BRAND	APPLICATION
Stroheim	Fabric
USES	CATEGORIES
Drapery, Multipurpose, Upholstery	Outdoor, Easy To Clean, Fibreguard, Crewels / Embroideries
COLORS	DESIGN TYPES
Grey	Embroidery, Geometric, Diamond
SCALE	RAILROADED
Medium	Not Railroaded



WIDTH	VERTICAL REPEAT	HORIZONTAL REPEAT	CONTENT
54.00 in (137.16 cm)	3.07 in (7.80 cm)	3.07 in (7.80 cm)	100% Polyolefin
BACKING	FIRE CODES	DOUBLE RUBS	PRODUCT NUMBER
	UFAC Class I / NFPA 260, Passes MVS 302	Exceeds 100,000 Double Rubs (Wyzenbeek Method)	3975702
COUNTRY	CLEANING CODES		
India	WW		

ADDITIONAL PRODUCT NOTES

Fibreguard Outdoor, Pfas-Free, Passes 35,000 Martindale Tst, Oeko Tex Standard 100, Indoor / Outdoor, 1,500 Hours Light Fastness, Iso 14001, Ca Tb 117-2013, Exclusive Pattern, Eco / Environment Plus