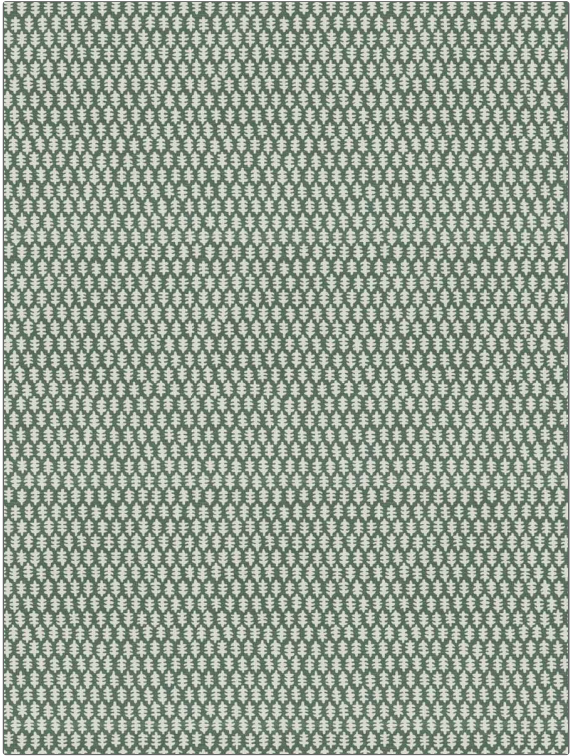


# Fabric Product Details

**PATTERN** VIVI  
**COLOR** Laurel

<b>BRAND</b>	<b>APPLICATION</b>
<b>Stroheim</b>	<b>Fabric</b>
<b>USES</b>	<b>CATEGORIES</b>
<b>Bedding, Drapery, Multipurpose, Upholstery</b>	<b>Solids / Small Scale Patterns, Prints, Linen</b>
<b>BOOK</b>	<b>COLORS</b>
<b>Color: Bluebell - Laurel</b>	<b>Green</b>
<b>DESIGN TYPES</b>	<b>SCALE</b>
<b>Global / Ethnic, Leaves, Print Pattern</b>	<b>Small</b>
<b>RAILROADED</b>	
<b>Not Railroaded</b>	



<b>WIDTH</b>	<b>VERTICAL REPEAT</b>	<b>HORIZONTAL REPEAT</b>	<b>CONTENT</b>
<b>54.00 in (137.16 cm)</b>	<b>11.62 in (29.51 cm)</b>	<b>9.00 in (22.86 cm)</b>	<b>57% Linen, 43% Cotton</b>
<b>BACKING</b>	<b>FIRE CODES</b>	<b>DOUBLE RUBS</b>	<b>PRODUCT NUMBER</b>
	<b>UFAC Class I / NFPA 260</b>	<b>Exceeds 32,000 Double Rubs (Wyzenbeek Method)</b>	<b>4342203</b>
<b>DATE BOOKED</b>	<b>COUNTRY</b>	<b>CLEANING CODES</b>	
<b>06/2021</b>	<b>China</b>	<b>S</b>	

**ADDITIONAL PRODUCT NOTES**  
Ca Tb 117-2013, Exclusive Pattern