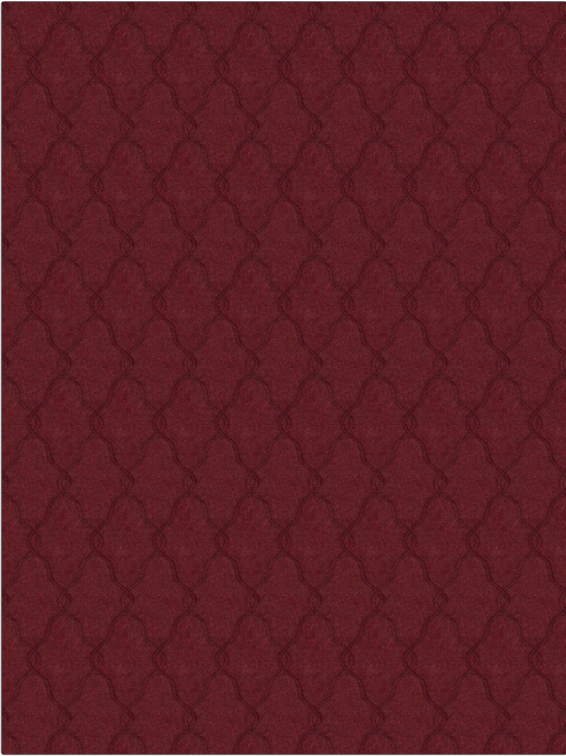


Fabric Product Details

PATTERN **Winterbury Wool**
COLOR **Loganberry**

BRAND	APPLICATION
Stroheim	Fabric
USES	CATEGORIES
Bedding, Drapery, Upholstery	Wool, Wovens, Crewels / Embroideries
COLORS	DESIGN TYPES
Burgundy	Embroidery, Ogee
SCALE	RAILROADED
Medium	Not Railroaded



WIDTH	FINISH	VERTICAL REPEAT	HORIZONTAL REPEAT
55.00 in (139.70 cm)	Soil & Stain Repellent Finish	5.75 in (14.60 cm)	3.00 in (7.62 cm)
CONTENT	BACKING	FIRE CODES	DOUBLE RUBS
74% Wool, 25% Nylon, 1% Polyester		UFAC Class II	Exceeds 27,000 Double Rubs (Wyzenbeek Method)
PRODUCT NUMBER	COUNTRY	CLEANING CODES	
4533002	Italy	S	

ADDITIONAL PRODUCT NOTES
Soil & Stain Repellent Finish, Exclusive Pattern