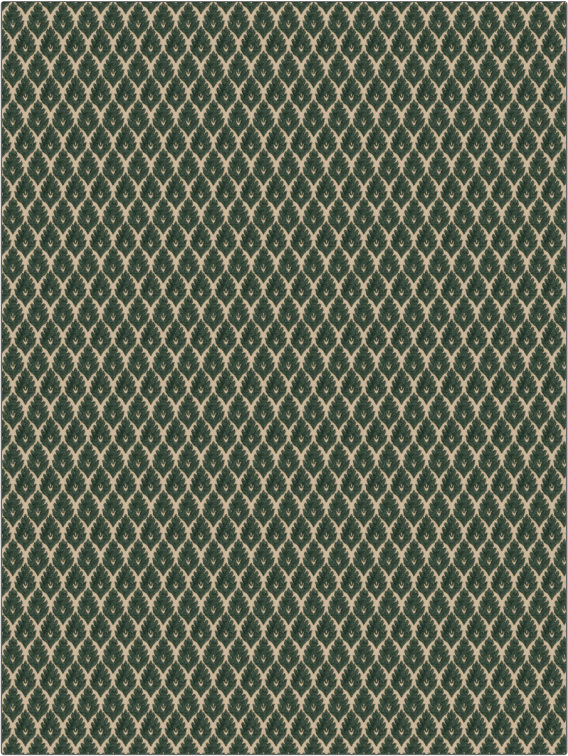


Fabric Product Details

| | |
|---------|-----------|
| PATTERN | Salisbury |
| COLOR | Malachite |

| | |
|---------------------|---------------------------|
| BRAND | APPLICATION |
| Stroheim | Fabric |
| USES | CATEGORIES |
| Bedding, Upholstery | Wovens, Chenille |
| COLORS | DESIGN TYPES |
| Green | Leaves, Small Scale Woven |
| SCALE | RAILROADED |
| Small | Not Railroaded |



| | | | |
|---|-------------------------------|-------------------------------|---|
| WIDTH | FINISH | VERTICAL REPEAT | HORIZONTAL REPEAT |
| 54.00 in (137.16 cm) | Soil & Stain Repellent Finish | 2.25 in (5.72 cm) | 1.25 in (3.18 cm) |
| CONTENT | BACKING | FIRE CODES | DOUBLE RUBS |
| 76% Rayon, 16% Polyester, 8% Recycled Polyester | 100% Acrylic Backing | UFAC Class I, Passes NFPA 260 | Exceeds 51,000 Double Rubs (Wyzenbeek Method) |
| PRODUCT NUMBER | COUNTRY | CLEANING CODES | |
| 4534802 | USA | S | |

| |
|--|
| ADDITIONAL PRODUCT NOTES |
| Soil & Stain Repellent Finish, 100% Acrylic Backing, Exclusive Pattern |