

# Fabric Product Details

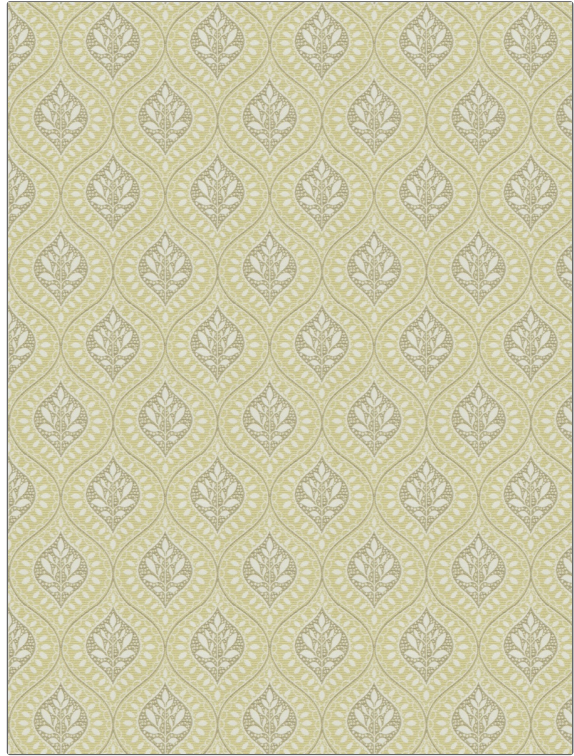
**PATTERN** Longborne  
**COLOR** 02

**BRAND** Stroheim  
**APPLICATION** Fabric

**USES** Bedding, Drapery, Multipurpose, Upholstery  
**CATEGORIES** Wovens

**COLORS** Grey, Light Green, Off White / Ivory  
**DESIGN TYPES** Leaves, Medallion, Ogee

**SCALE** Medium  
**RAILROADED** Not Railroaded



<b>WIDTH</b>	<b>VERTICAL REPEAT</b>	<b>HORIZONTAL REPEAT</b>	<b>CONTENT</b>
52.00 in (132.08 cm)	3.50 in (8.89 cm)	5.00 in (12.70 cm)	49% Cotton, 26% Viscose, 25% Polyester
<b>BACKING</b>	<b>DOUBLE RUBS</b>	<b>PRODUCT NUMBER</b>	<b>COUNTRY</b>
	Exceeds 21,000 Double Rubs (Wyzenbeek Method)	4606002	India
<b>CLEANING CODES</b>			
S			

**ADDITIONAL PRODUCT NOTES**  
 Exclusive Pattern