

Fabric Product Details

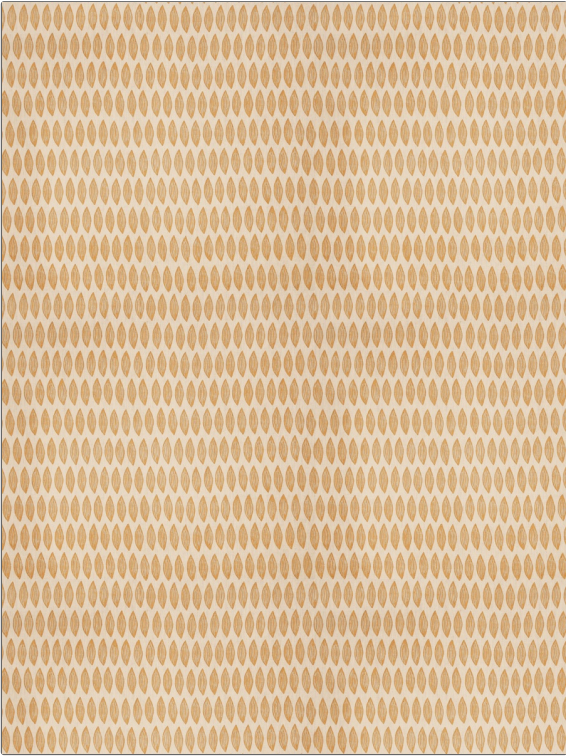
PATTERN Leaf
COLOR Harvest Moon

BRAND Stroheim
APPLICATION Fabric

USES Bedding, Drapery, Multipurpose
CATEGORIES Prints

COLORS Beige, Gold
DESIGN TYPES Global / Ethnic, Leaves, Contemporary / Modern

SCALE Small
RAILROADED Not Railroaded



WIDTH	VERTICAL REPEAT	HORIZONTAL REPEAT	CONTENT
54.00 in (137.16 cm)	25.25 in (64.14 cm)	13.50 in (34.29 cm)	100% Linen
BACKING	PRODUCT NUMBER	COUNTRY	CLEANING CODES
	5360905	China	S

ADDITIONAL PRODUCT NOTES
 Half Drop Repeat, Exclusive Pattern