

Fabric Product Details

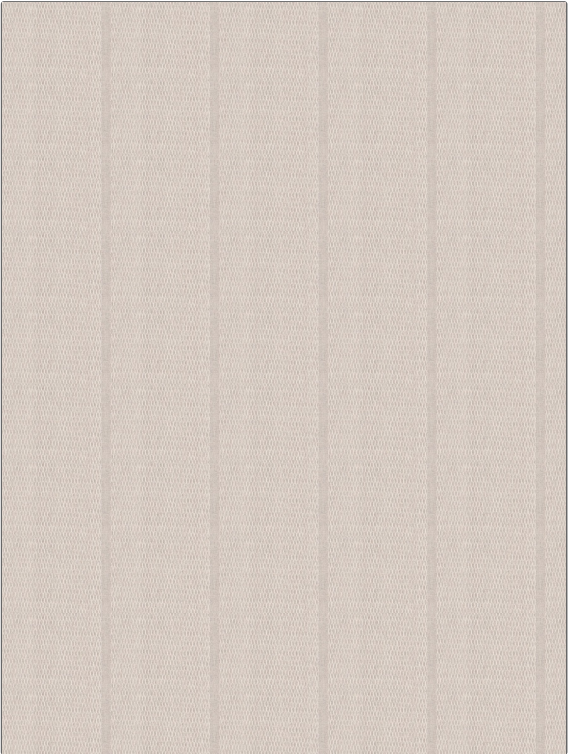
PATTERN Penbryn Stripe
COLOR Whisper

BRAND Stroheim
APPLICATION Fabric

USES Drapery
CATEGORIES Wide Width, Sheer, Linen

COLORS Lavender / Purple
DESIGN TYPES Stripes

SCALE Medium
RAILROADED Railroaded



WIDTH	VERTICAL REPEAT	HORIZONTAL REPEAT	CONTENT
116.00 in (294.64 cm)	0.00 in (0.00 cm)	5.25 in (13.34 cm)	79% Linen, 21% Polyester
BACKING	PRODUCT NUMBER	COUNTRY	CLEANING CODES
	5390703	Turkey	S

ADDITIONAL PRODUCT NOTES
Shown Railroaded, Exclusive Pattern