

Fabric Product Details

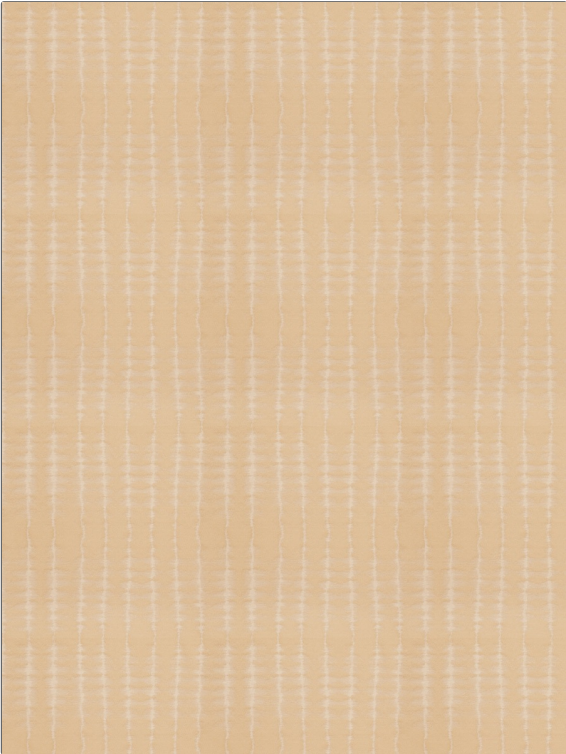
PATTERN Kashta
COLOR Straw

BRAND Stroheim
APPLICATION Fabric

USES Bedding, Drapery, Multipurpose
CATEGORIES Faux Silk

COLORS Beige, Gold
DESIGN TYPES Stripes, Contemporary / Modern

SCALE Medium
RAILROADED Not Railroaded



WIDTH	VERTICAL REPEAT	HORIZONTAL REPEAT	CONTENT
56.00 in (142.24 cm)	10.00 in (25.40 cm)	9.50 in (24.13 cm)	51% Polyester, 25% Linen, 24% Viscose
BACKING	FIRE CODES	PRODUCT NUMBER	COUNTRY
	UFAC Class I / NFPA 260	5396203	India
CLEANING CODES			
S			

ADDITIONAL PRODUCT NOTES
Ca Tb 117-2013, Exclusive Pattern