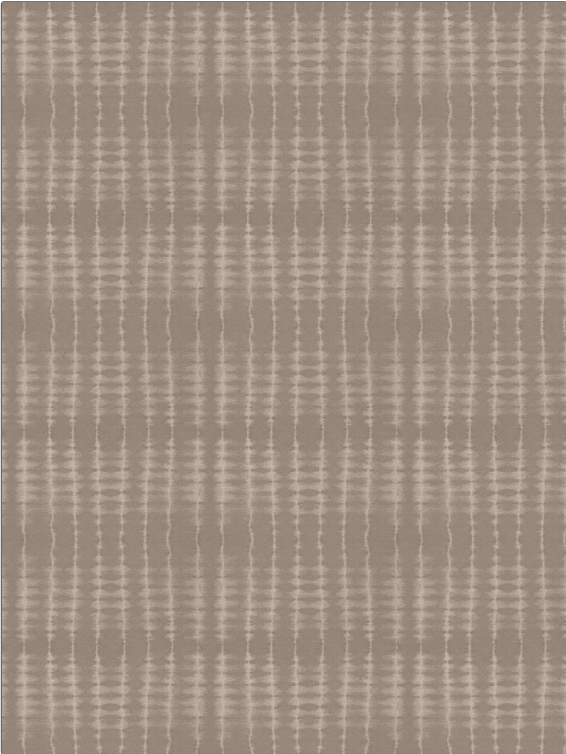


Fabric Product Details

PATTERN Kashta
COLOR 01



BRAND	APPLICATION
Stroheim	Fabric
USES	CATEGORIES
Bedding, Drapery, Multipurpose	Faux Silk
COLORS	DESIGN TYPES
Grey	Stripes, Contemporary / Modern
SCALE	RAILROADED
Medium	Not Railroaded

WIDTH	VERTICAL REPEAT	HORIZONTAL REPEAT	CONTENT
56.00 in (142.24 cm)	10.00 in (25.40 cm)	9.50 in (24.13 cm)	51% Polyester, 25% Linen, 24% Viscose
BACKING	FIRE CODES	PRODUCT NUMBER	COUNTRY
	UFAC Class I / NFPA 260	5396301	India
CLEANING CODES			
S			

ADDITIONAL PRODUCT NOTES

Ca Tb 117-2013, Exclusive Pattern