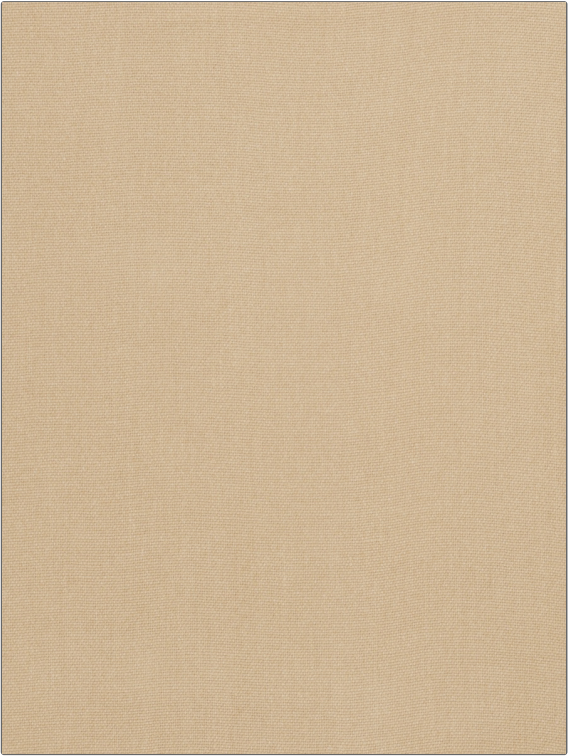


Fabric Product Details

PATTERN	Livarot
COLOR	02

BRAND	APPLICATION
Stroheim	Fabric
USES	CATEGORIES
Bedding, Drapery, Multipurpose	Solids / Small Scale Patterns, Linen
COLORS	DESIGN TYPES
Beige	Solid
RAILROADED	
Not Railroaded	



WIDTH	VERTICAL REPEAT	HORIZONTAL REPEAT	CONTENT
55.00 in (139.70 cm)	0.00 in (0.00 cm)	0.00 in (0.00 cm)	73% Linen, 21% Viscose, 6% Polyester
BACKING	FIRE CODES	PRODUCT NUMBER	COUNTRY
	UFAC Class I / NFPA 260	5409002	India
CLEANING CODES			
S			

ADDITIONAL PRODUCT NOTES
Exclusive Pattern