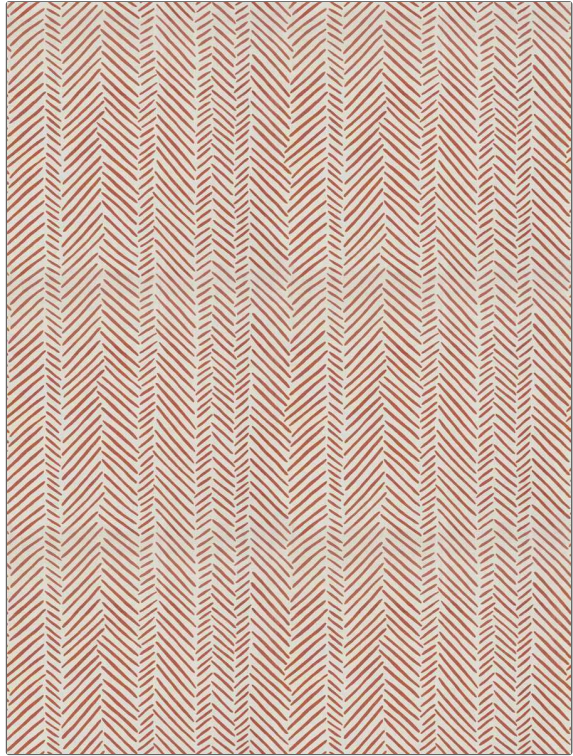


Fabric Product Details

PATTERN Ziggy
COLOR 03

BRAND	APPLICATION
Stroheim	Fabric
USES	CATEGORIES
Bedding, Drapery, Multipurpose, Upholstery	Prints, Linen
COLORS	DESIGN TYPES
Coral / Peach	Herringbone, Print Pattern, Contemporary / Modern
SCALE	RAILOADED
Medium	Not Railed



WIDTH	VERTICAL REPEAT	HORIZONTAL REPEAT	CONTENT
54.00 in (137.16 cm)	25.25 in (64.14 cm)	27.00 in (68.58 cm)	100% Linen
BACKING	FIRE CODES	DOUBLE RUBS	PRODUCT NUMBER
	UFAC Class I / NFPA 260	Exceeds 30,000 Double Rubs (Wyzenbeek Method)	5421503
COUNTRY	CLEANING CODES		
China	S		

ADDITIONAL PRODUCT NOTES

Ca Tb 117-2013, Exclusive Pattern