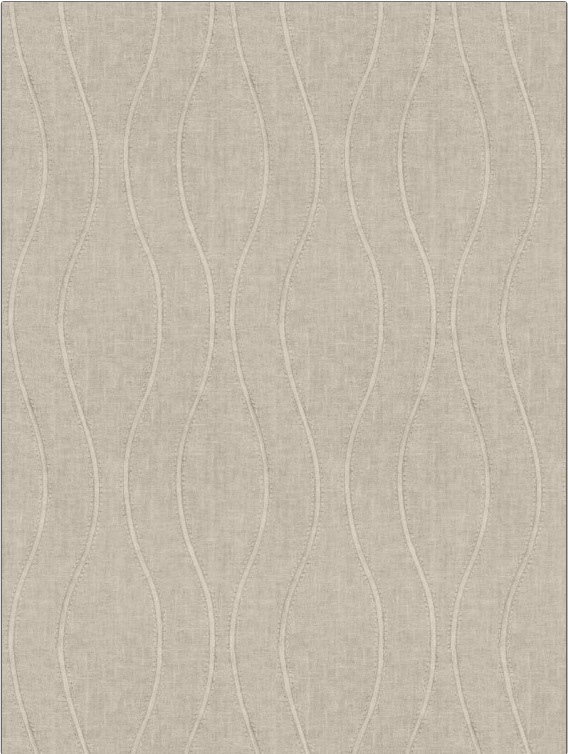


Fabric Product Details

PATTERN	Kasos
COLOR	Sterling

BRAND	APPLICATION
Stroheim	Fabric
USES	CATEGORIES
Drapery	Sheer, Crewels / Embroideries
BOOK	COLORS
Ambiance Narrow Sheers (2 Books) Moonbean / Biscotti	Linen, Metallic
DESIGN TYPES	SCALE
Embroidery, Lattice / Fretwork	Medium
RAILOADED	
Not Railed	



WIDTH	VERTICAL REPEAT	HORIZONTAL REPEAT	CONTENT
48.00 in (121.92 cm)	7.87 in (19.99 cm)	10.59 in (26.90 cm)	Embroidery: 55% Zari, 45% Rayon, Base: 100% Linen
BACKING	PRODUCT NUMBER	DATE BOOKED	COUNTRY
	5652502	06/2024	India
CLEANING CODES			
S			

ADDITIONAL PRODUCT NOTES
Exclusive Pattern, Embroidered Textiles Are Not, Guaranteed For Precise Color, Matching And Colorfastness., Color Placement Of Embroidery, May Vary. All Measurements, Quoted For Repeats Are, Approximate.