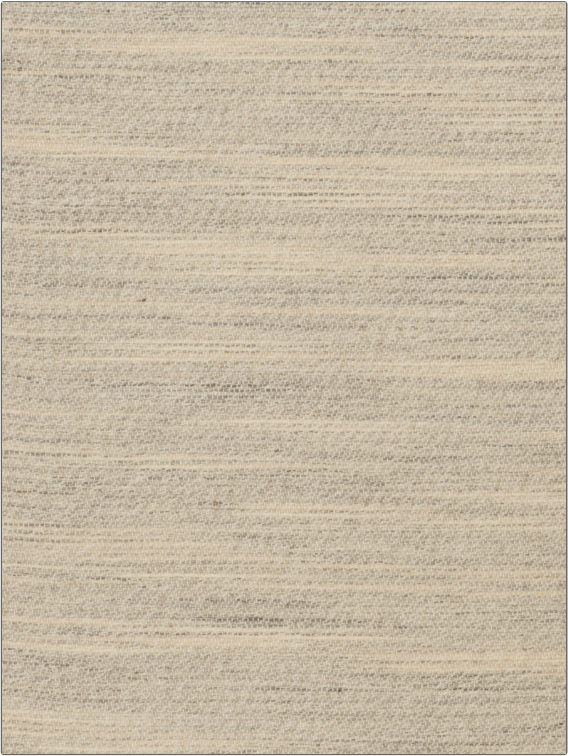


Fabric Product Details

PATTERN	Edinburgh
COLOR	01

BRAND	APPLICATION
Stroheim	Fabric
USES	CATEGORIES
Bedding, Drapery, Multipurpose, Upholstery	Wool
COLORS	DESIGN TYPES
Linen	Solid
RAILOADED	
Not Railroaded	



WIDTH	VERTICAL REPEAT	HORIZONTAL REPEAT	CONTENT
55.00 in (139.70 cm)	0.00 in (0.00 cm)	0.00 in (0.00 cm)	65% Wool, 21% Acrylic, 14% Polyamide
BACKING	FIRE CODES	DOUBLE RUBS	PRODUCT NUMBER
	UFAC Class I / NFPA 260	Exceeds 12,000 Double Rubs (Wyzenbeek Method)	5816401
COUNTRY	CLEANING CODES		
Italy	S		

ADDITIONAL PRODUCT NOTES
Exclusive Pattern