

Fabric Product Details

PATTERN **5767B Arezzo**  
COLOR **S0710 Green Tea**

BRAND

**Stroheim**

APPLICATION

**Fabric**

USES

**Multipurpose, Upholstery**

CATEGORIES

**Wovens**

COLORS

**Light Green, Pink**

DESIGN TYPES

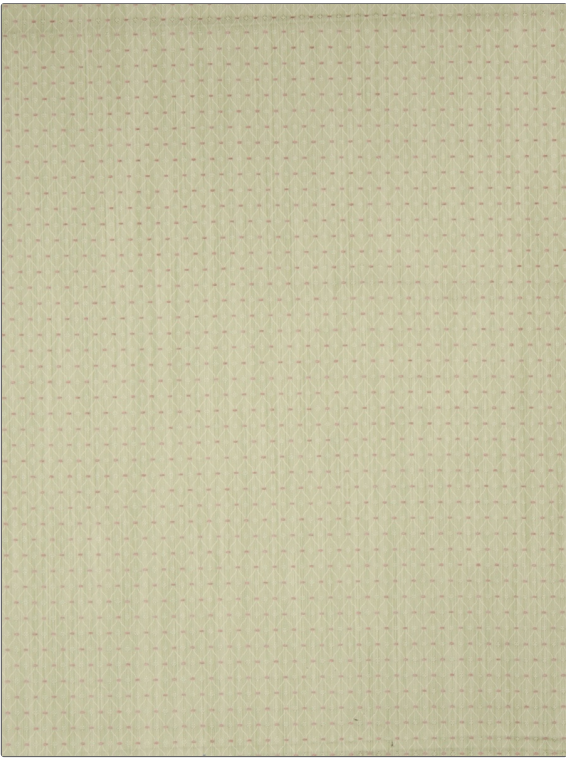
**Small Scale Woven, Ogee,  
Diamond**

SCALE

**Small**

RAILROADED

**Not Railroaded**



WIDTH

**54.00 in (137.16 cm)**

VERTICAL REPEAT

**1.38 in (3.51 cm)**

HORIZONTAL REPEAT

**0.75 in (1.90 cm)**

CONTENT

**54% Viscose 46% Cotton**

BACKING

DOUBLE RUBS

**Exceeds 15,000 Double  
Rubs (Wyzenbeek Method)**

PRODUCT NUMBER

**6076623**

COUNTRY

**USA**

ADDITIONAL PRODUCT NOTES

**Dry Clean Only**