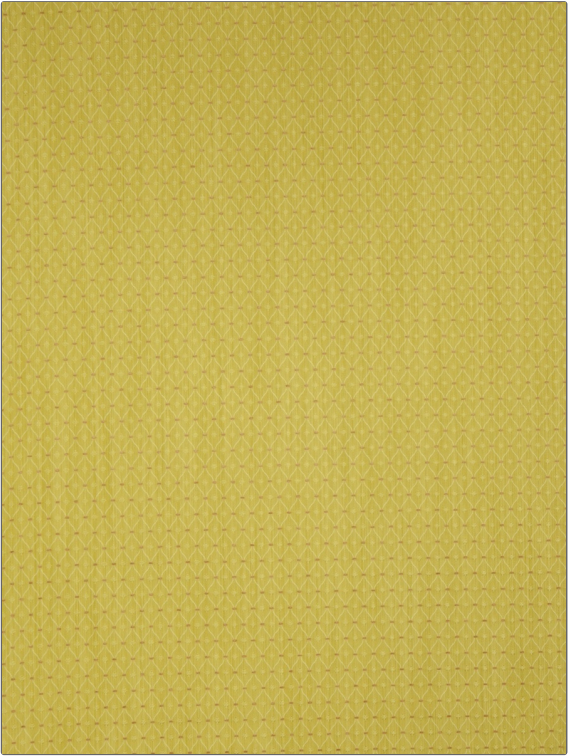


Fabric Product Details

| | |
|---------|--------------|
| PATTERN | 5767B Arezzo |
| COLOR | S0760 Lime |

| | |
|--------------------------|----------------------------------|
| BRAND | APPLICATION |
| Stroheim | Fabric |
| USES | CATEGORIES |
| Multipurpose, Upholstery | Wovens |
| COLORS | DESIGN TYPES |
| Light Green, Pink | Small Scale Woven, Ogee, Diamond |
| SCALE | RAILROADED |
| Small | Not Railroaded |



| | | | |
|----------------------|---|-------------------|------------------------|
| WIDTH | VERTICAL REPEAT | HORIZONTAL REPEAT | CONTENT |
| 54.00 in (137.16 cm) | 1.38 in (3.51 cm) | 0.75 in (1.90 cm) | 54% Viscose 46% Cotton |
| BACKING | DOUBLE RUBS | PRODUCT NUMBER | COUNTRY |
| | Exceeds 15,000 Double Rubs (Wyzenbeek Method) | 6076627 | USA |

| |
|--------------------------|
| ADDITIONAL PRODUCT NOTES |
| Dry Clean Only |