

Fabric Product Details

PATTERN Hardwick Lattice
COLOR Pumpkin

BRAND

Stroheim

APPLICATION

Fabric

USES

**Bedding, Drapery,
Multipurpose, Upholstery**

CATEGORIES

**Wovens, Crewels /
Embroideries**

COLORS

Orange / Spice

DESIGN TYPES

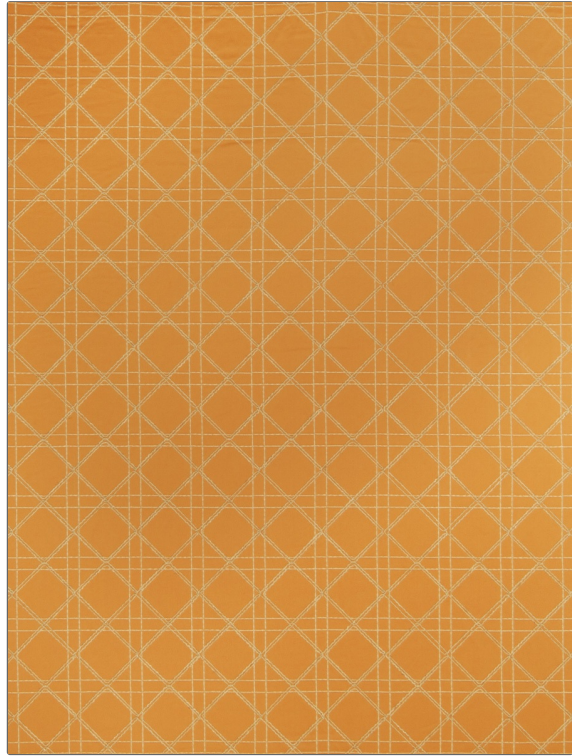
Embroidery, Diamond

SCALE

Small

RAILROADED

Not Railroaded



WIDTH

55.00 in (139.70 cm)

FINISH

Soil & Stain Repellent Finish

VERTICAL REPEAT

3.10 in (7.87 cm)

HORIZONTAL REPEAT

3.10 in (7.87 cm)

CONTENT

**78% Cotton, 13% Viscose,
5% Polyester, 4% Linen**

BACKING

PRODUCT NUMBER

6325003

COUNTRY

Italy

CLEANING CODES

S

ADDITIONAL PRODUCT NOTES

Soil & Stain Repellent Finish, Exclusive Pattern, Embroidered Textiles Are Not, Guaranteed For Precise Color, Matching And Colorfastness., Color Placement Of Embroidery, May Vary. All Measurements, Quoted For Repeats Are, Approximate.