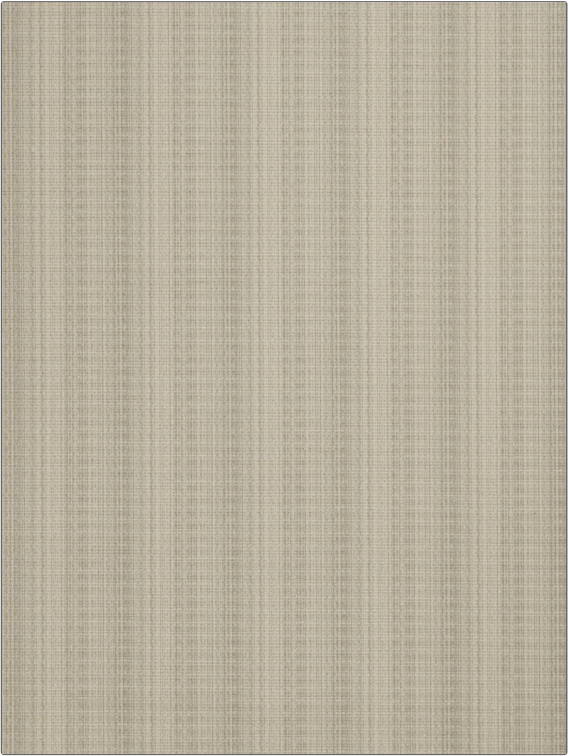


Fabric Product Details

PATTERN	Zari Faille
COLOR	Metallic

BRAND	APPLICATION
Stroheim	Fabric
USES	CATEGORIES
Bedding, Drapery, Multipurpose, Upholstery	Silk, Wovens, Solids / Small Scale Patterns
COLORS	DESIGN TYPES
Grey, Metallic	Texture Plain, Contemporary / Modern
RAILROADED	
Not Railroaded	



WIDTH	FINISH	VERTICAL REPEAT	HORIZONTAL REPEAT
54.00 in (137.16 cm)	Soil & Stain Repellent Finish	0.00 in (0.00 cm)	0.00 in (0.00 cm)
CONTENT	BACKING	FIRE CODES	DOUBLE RUBS
78% Cotton 19% Silk 3% Zari		UFAC Class I, Passes NFPA 260	Exceeds 10,000 Double Rubs (Wyzenbeek Method)
PRODUCT NUMBER	COUNTRY	CLEANING CODES	
6325804	USA	S	

ADDITIONAL PRODUCT NOTES
Soil & Stain Repellent Finish, Exclusive Pattern, Silks Are Not, Guaranteed Against Fading Or, For Precise Color Matching,, Colorfastness And Durability., Cutting From Current Stock