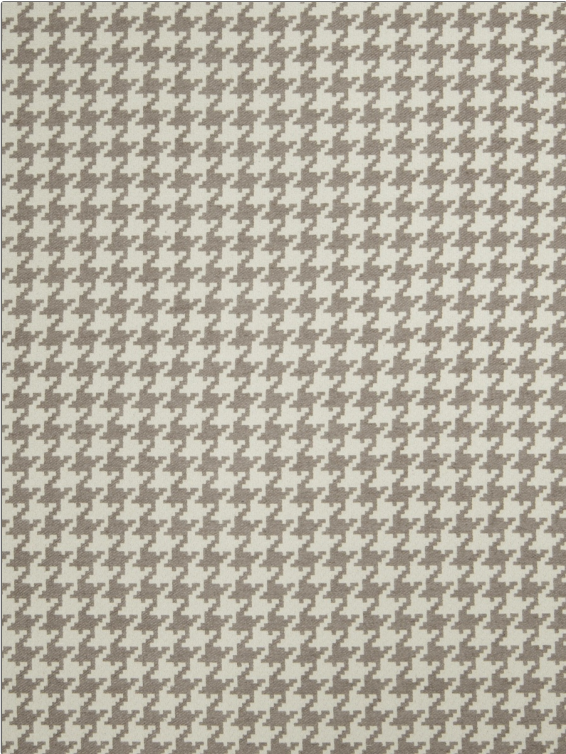


# Fabric Product Details

**PATTERN** Salzburg  
**COLOR** Moonstone

<b>BRAND</b>	<b>APPLICATION</b>
Stroheim	Fabric
<b>USES</b>	<b>CATEGORIES</b>
Upholstery	Wovens
<b>COLORS</b>	<b>DESIGN TYPES</b>
Lavender / Purple, Taupe / Tan, Linen	Houndstooth
<b>SCALE</b>	<b>RAILROADED</b>
Small	Not Railroaded



<b>WIDTH</b>	<b>FINISH</b>	<b>VERTICAL REPEAT</b>	<b>HORIZONTAL REPEAT</b>
54.00 in (137.16 cm)	Soil & Stain Repellent Finish	1.50 in (3.81 cm)	1.50 in (3.81 cm)
<b>CONTENT</b>	<b>BACKING</b>	<b>FIRE CODES</b>	<b>DOUBLE RUBS</b>
84% Rayon, 9% Linen, 7% Cotton		UFAC Class II, Passes NFPA 260	Exceeds 15,000 Double Rubs (Wyzenbeek Method)
<b>PRODUCT NUMBER</b>	<b>COUNTRY</b>	<b>CLEANING CODES</b>	
6328801	USA	S	

**ADDITIONAL PRODUCT NOTES**

Soil & Stain Repellent Finish, Exclusive Pattern