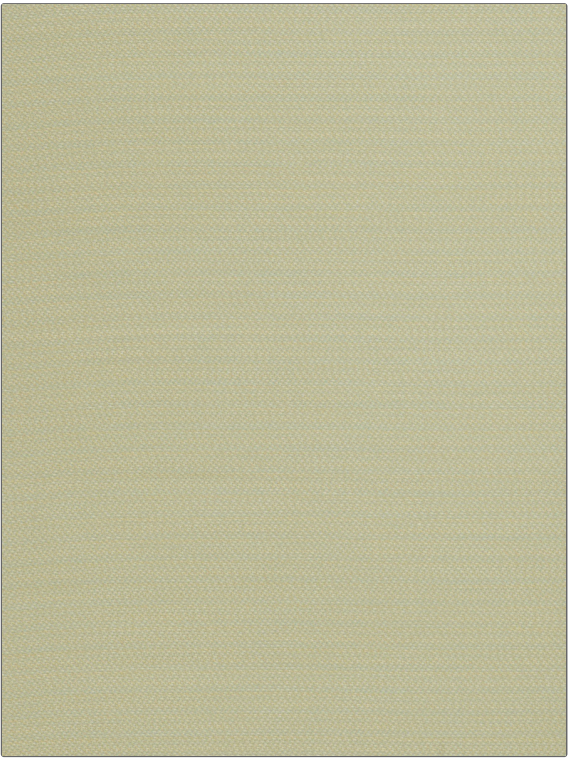


Fabric Product Details

| | |
|---------|-----------|
| PATTERN | Advent |
| COLOR | Dragonfly |

| | |
|----------------|--|
| BRAND | APPLICATION |
| Stroheim | Fabric |
| USES | CATEGORIES |
| Upholstery | Outdoor, Wovens, Solids / Small Scale Patterns |
| COLORS | DESIGN TYPES |
| Aqua / Teal | Solid, Texture Plain |
| RAILROADED | |
| Not Railroaded | |



| | | | |
|---------------------------|-------------------------|-------------------------------|---|
| WIDTH | FINISH | VERTICAL REPEAT | HORIZONTAL REPEAT |
| 54.00 in (137.16 cm) | Water & Stain Repellant | 0.00 in (0.00 cm) | 0.00 in (0.00 cm) |
| CONTENT | BACKING | FIRE CODES | DOUBLE RUBS |
| 100% Solution Dye Acrylic | | UFAC Class I, Passes NFPA 260 | Exceeds 20,000 Double Rubs (Wyzenbeek Method) |
| PRODUCT NUMBER | COUNTRY | CLEANING CODES | |
| 6345803 | USA | WW | |

| |
|--|
| ADDITIONAL PRODUCT NOTES |
| Water & Stain Repellant, Oeko Tex Standard 100, Mildew Resistant, Indoor / Outdoor, 1,500 Hours Light Fastness, 5 Year Warranty, Exclusive Pattern |