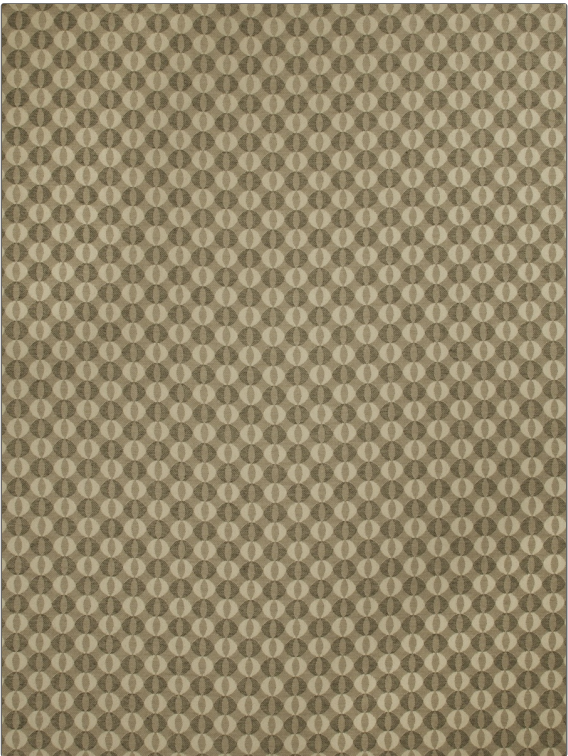


Fabric Product Details

|         |          |
|---------|----------|
| PATTERN | Playtime |
| COLOR   | Pebble   |

|            |                                  |
|------------|----------------------------------|
| BRAND      | APPLICATION                      |
| Stroheim   | Fabric                           |
| USES       | CATEGORIES                       |
| Upholstery | Outdoor, Wovens                  |
| COLORS     | DESIGN TYPES                     |
| Linen      | Geometric, Contemporary / Modern |
| SCALE      | RAILROADED                       |
| Small      | Not Railroaded                   |



|                           |                         |                               |   |
|---------------------------|-------------------------|-------------------------------|---|
| WIDTH                     | FINISH                  | VERTICAL REPEAT               | HORIZONTAL REPEAT                             |
| 54.00 in (137.16 cm)      | Water & Stain Repellant | 1.75 in (4.44 cm)             | 2.00 in (5.08 cm)                             |
| CONTENT                   | BACKING                 | FIRE CODES                    | DOUBLE RUBS                                   |
| 100% Solution Dye Acrylic |                         | UFAC Class I, Passes NFPA 260 | Exceeds 21,000 Double Rubs (Wyzenbeek Method) |
| PRODUCT NUMBER            | COUNTRY                 | CLEANING CODES                |   |
| 6347402                   | USA                     | WW                            |   |

|  |
|--|
| ADDITIONAL PRODUCT NOTES   |
| Water & Stain Repellant, Oeko Tex Standard 100, Mildew Resistant, Indoor / Outdoor, 1,500 Hours Light Fastness, 5 Year Warranty, Exclusive Pattern |