

# Fabric Product Details

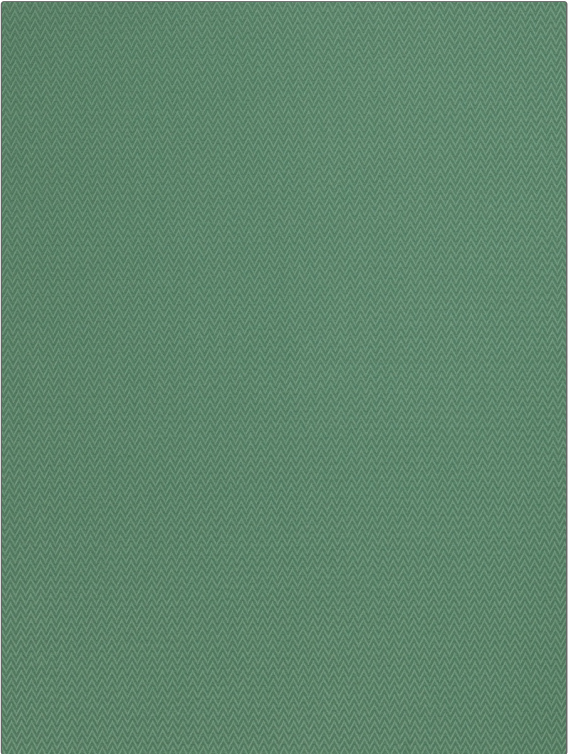
**PATTERN** Inside  
**COLOR** Emerald

**BRAND** Stroheim  
**APPLICATION** Fabric

**USES** Upholstery  
**CATEGORIES** Outdoor, Wovens

**COLORS** Aqua / Teal  
**DESIGN TYPES** Herringbone, Solid

**RAILROADED**  
 Not Railroaded



<b>WIDTH</b> 54.00 in (137.16 cm)	<b>FINISH</b> Water & Stain Repellant	<b>VERTICAL REPEAT</b> 0.10 in (0.25 cm)	<b>HORIZONTAL REPEAT</b> 0.10 in (0.25 cm)
<b>CONTENT</b> 100% Solution Dye Acrylic	<b>BACKING</b>	<b>FIRE CODES</b> UFAC Class I, Passes NFPA 260	<b>DOUBLE RUBS</b> Exceeds 15,000 Double Rubs (Wyzenbeek Method)
<b>PRODUCT NUMBER</b> 6347608	<b>COUNTRY</b> USA	<b>CLEANING CODES</b> WW	

**ADDITIONAL PRODUCT NOTES**  
 Water & Stain Repellant, Oeko Tex Standard 100, Mildew Resistant, Indoor / Outdoor, 1,500 Hours Light Fastness, 5 Year Warranty, Exclusive Pattern