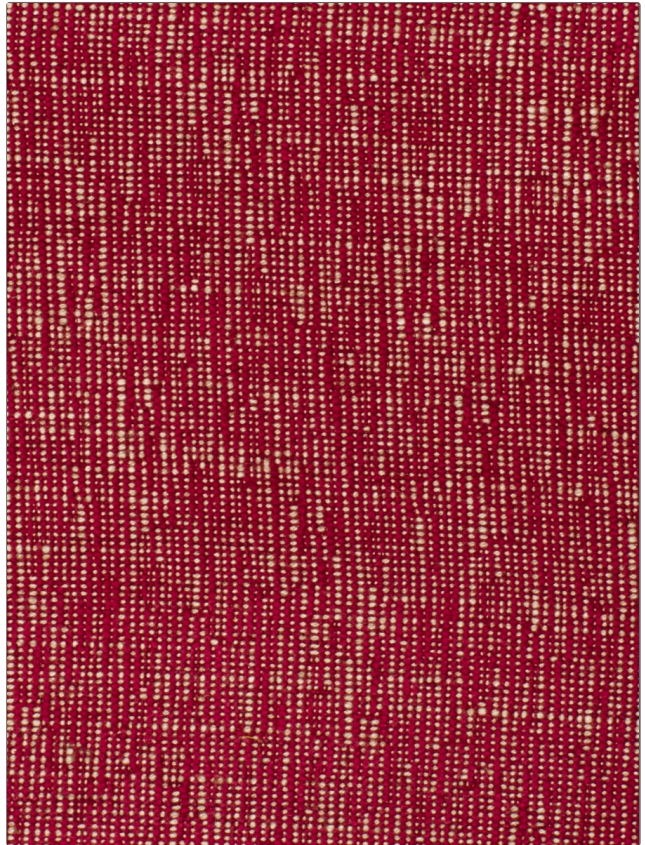


<b>PATTERN</b>	<b>Hampton Texture</b>
<b>COLOR</b>	<b>Strawberry</b>



<b>BRAND</b>	<b>APPLICATION</b>
<b>Stroheim</b>	<b>Fabric</b>
<b>USES</b>	<b>CATEGORIES</b>
<b>Bedding, Multipurpose, Upholstery</b>	<b>Wovens, Solids / Small Scale Patterns, Chenille</b>
<b>BOOK</b>	<b>COLORS</b>
<b>Hampton Texture</b>	<b>Red</b>
<b>DESIGN TYPES</b>	<b>RAILROADED</b>
<b>Solid, Texture Plain</b>	<b>Not Railroaded</b>

<b>WIDTH</b>	<b>VERTICAL REPEAT</b>	<b>HORIZONTAL REPEAT</b>	<b>CONTENT</b>
<b>55.00 in (139.70 cm)</b>	<b>0.00 in (0.00 cm)</b>	<b>0.00 in (0.00 cm)</b>	<b>38% Viscose, 29% Polyester, 25% Cotton, 8% Linen</b>
<b>FIRE CODES</b>	<b>DOUBLE RUBS</b>	<b>PRODUCT NUMBER</b>	<b>DATE BOOKED</b>
<b>UFAC Class I, Passes NFPA 260</b>	<b>Exceeds 30,000 Double Rubs (Wyzenbeek Method)</b>	<b>0652012</b>	<b>02/2012</b>
<b>COUNTRY</b>	<b>CLEANING CODES</b>		
<b>Italy</b>	<b>S</b>		

<b>ADDITIONAL PRODUCT NOTES</b>
<b>Exclusive Pattern</b>