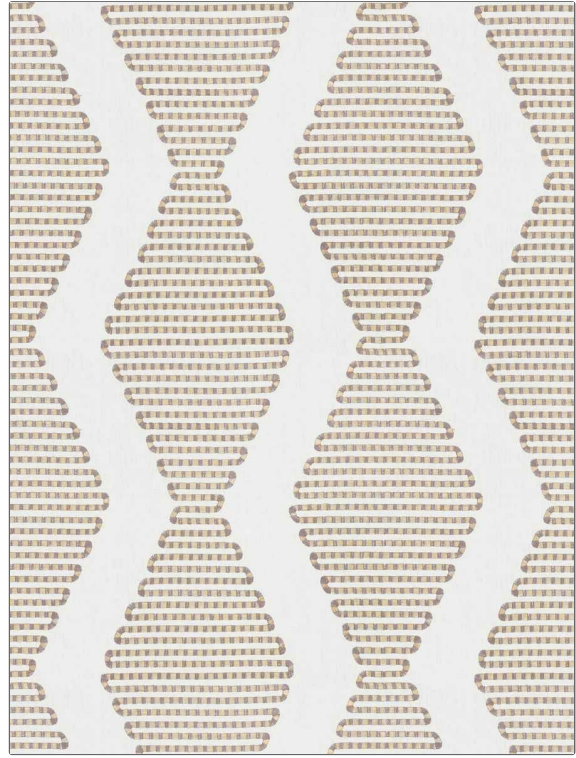


# Fabric Product Details

<b>PATTERN</b>	<b>Kemali</b>
<b>COLOR</b>	<b>Quartz</b>
<b>BRAND</b>	<b>APPLICATION</b>
<b>Stroheim</b>	<b>Fabric</b>
<b>USES</b>	<b>CATEGORIES</b>
<b>Bedding, Drapery</b>	<b>Crewels / Embroideries, Linen</b>
<b>BOOK</b>	<b>COLORS</b>
<b>Color Embroideries (2 Books) Quartz To Citronella</b>	<b>Lavender / Purple, Pink</b>
<b>DESIGN TYPES</b>	<b>SCALE</b>
<b>Embroidery, Ogee</b>	<b>Large</b>
<b>RAILOADED</b>	
<b>Not Railroaded</b>	



<b>WIDTH</b>	<b>VERTICAL REPEAT</b>	<b>HORIZONTAL REPEAT</b>	<b>CONTENT</b>
<b>50.00 in (127.00 cm)</b>	<b>14.75 in (37.46 cm)</b>	<b>16.50 in (41.91 cm)</b>	<b>Embroidery: 100% Viscose, Base: 55% Linen, 45% Cotton</b>
<b>BACKING</b>	<b>PRODUCT NUMBER</b>	<b>DATE BOOKED</b>	<b>COUNTRY</b>
	<b>6553306</b>	<b>06/2022</b>	<b>India</b>
<b>CLEANING CODES</b>			
<b>S</b>			

**ADDITIONAL PRODUCT NOTES**

**Exclusive Pattern, Embroidered Textiles Are Not, Guaranteed For Precise Color, Matching And Colorfastness., Color Placement Of Embroidery, May Vary. All Measurements, Quoted For Repeats Are, Approximate.**