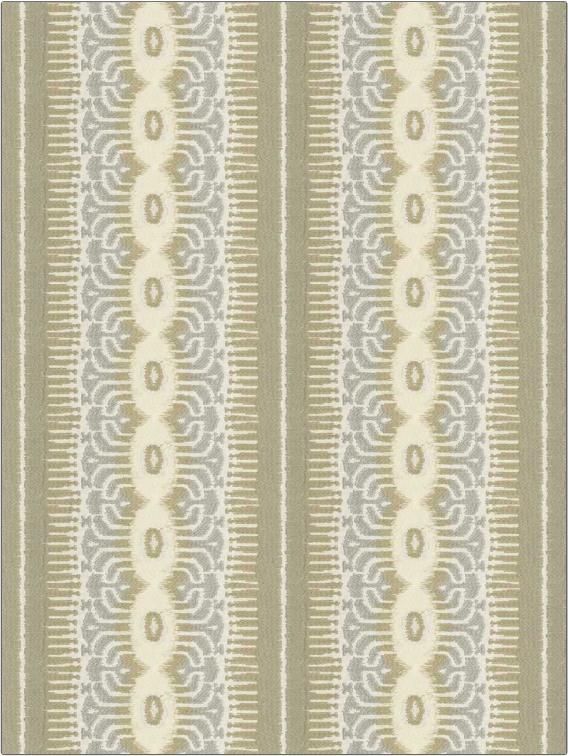


Fabric Product Details

| | |
|--------------------------|--|
| PATTERN | Frazada |
| COLOR | 03 |
| BRAND | APPLICATION |
| Stroheim | Fabric |
| USES | CATEGORIES |
| Bedding, Drapery | Crewels / Embroideries, Linen |
| COLORS | DESIGN TYPES |
| Grey, Taupe / Tan, Linen | Embroidery, Flamestitch, Global / Ethnic, Stripes |
| SCALE | RAILOADED |
| Large | Not Railed |



| | | | |
|----------------------|--------------------|---------------------|---|
| WIDTH | VERTICAL REPEAT | HORIZONTAL REPEAT | CONTENT |
| 50.00 in (127.00 cm) | 4.00 in (10.16 cm) | 12.50 in (31.75 cm) | Embroidery: 100% Polyester, Base: 55% Linen, 45% Cotton |
| BACKING | PRODUCT NUMBER | COUNTRY | CLEANING CODES |
| | 6553603 | India | S |

| |
|---|
| ADDITIONAL PRODUCT NOTES |
| Ca Tb 117-2013, Exclusive Pattern, Embroidered Textiles Are Not, Guaranteed For Precise Color, Matching And Colorfastness., Color Placement Of Embroidery, May Vary. All Measurements, Quoted For Repeats Are, Approximate. |