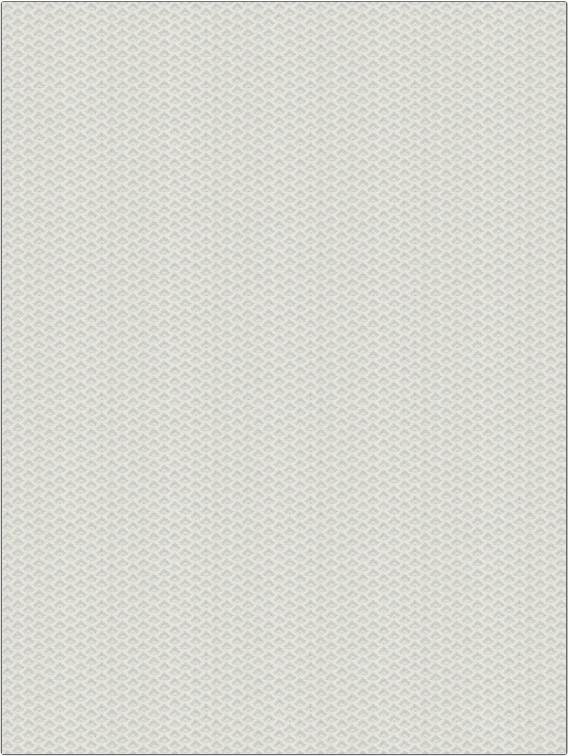


Fabric Product Details

PATTERN	Kobuk
COLOR	Ice Blue

BRAND	APPLICATION
Stroheim	Fabric
USES	CATEGORIES
Bedding, Multipurpose, Upholstery	Wovens
COLORS	DESIGN TYPES
Light Blue	Small Scale Woven
SCALE	RAILROADED
Small	Railroaded



WIDTH	VERTICAL REPEAT	HORIZONTAL REPEAT	CONTENT
54.00 in (137.16 cm)	0.78 in (1.98 cm)	0.39 in (0.99 cm)	42% Viscose, 34% Cotton, 24% Polyester
BACKING	FIRE CODES	DOUBLE RUBS	PRODUCT NUMBER
	UFAC Class I / NFPA 260	Exceeds 51,000 Double Rubs (Wyzenbeek Method)	6711501
COUNTRY	CLEANING CODES		
Italy	S		

ADDITIONAL PRODUCT NOTES
Passes 25,000 Martindale Tst, Ca Tb 117-2013, Shown Railroaded, Exclusive Pattern