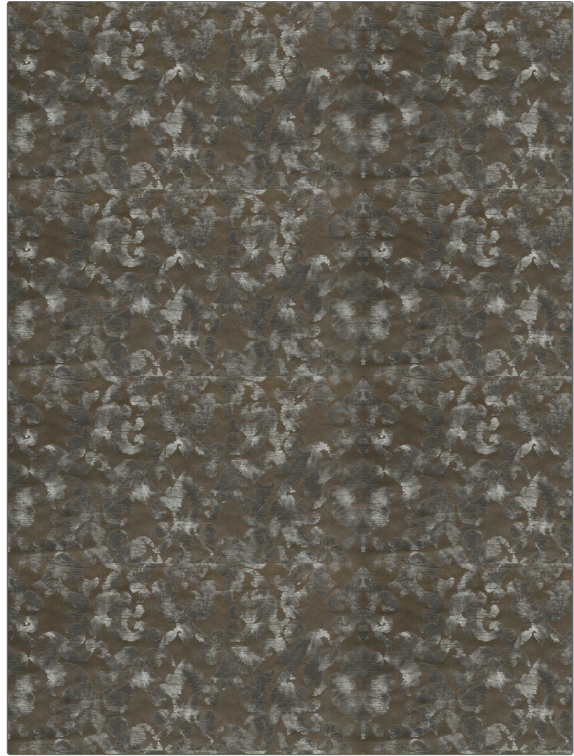


# Fabric Product Details

**PATTERN** **Vedea**  
**COLOR** **Taffy**

<b>BRAND</b>	<b>APPLICATION</b>
<b>Stroheim</b>	<b>Fabric</b>
<b>USES</b>	<b>CATEGORIES</b>
<b>Bedding, Drapery, Multipurpose, Upholstery</b>	<b>Velvet / Grospoint, Prints</b>
<b>COLORS</b>	<b>DESIGN TYPES</b>
<b>Taupe / Tan, Metallic</b>	<b>Damask</b>
<b>SCALE</b>	<b>RAILROADED</b>
<b>Large</b>	<b>Not Railroaded</b>



<b>WIDTH</b>	<b>VERTICAL REPEAT</b>	<b>HORIZONTAL REPEAT</b>	<b>CONTENT</b>
<b>53.00 in (134.62 cm)</b>	<b>10.50 in (26.67 cm)</b>	<b>17.00 in (43.18 cm)</b>	<b>90% Cotton, 9% Polyester, 1% Polyamide</b>
<b>BACKING</b>	<b>FIRE CODES</b>	<b>DOUBLE RUBS</b>	<b>PRODUCT NUMBER</b>
	<b>UFAC Class I / NFPA 260</b>	<b>Exceeds 30,000 Double Rubs (Wyzenbeek Method)</b>	<b>6715802</b>
<b>COUNTRY</b>	<b>CLEANING CODES</b>		
<b>Italy</b>	<b>S</b>		

**ADDITIONAL PRODUCT NOTES**

**Ca Tb 117-2013, Exclusive Pattern**