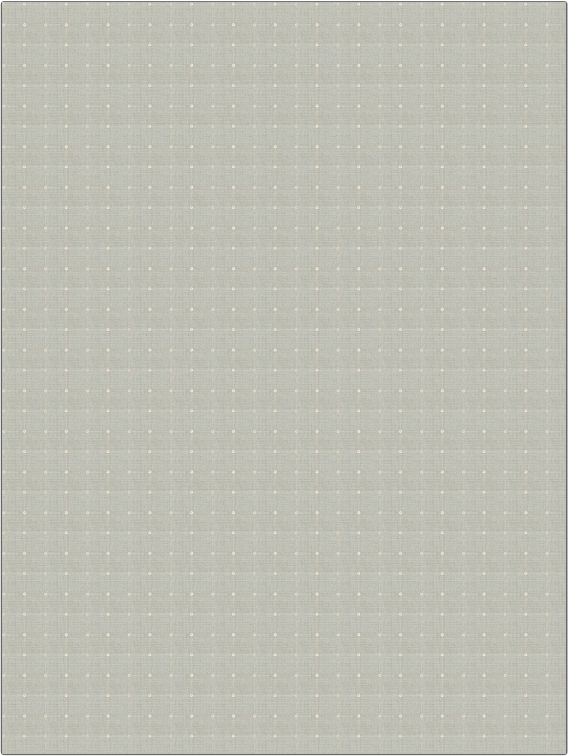


Fabric Product Details

PATTERN	Daugava
COLOR	Mist

BRAND	APPLICATION
Stroheim	Fabric
USES	CATEGORIES
Bedding, Drapery, Multipurpose	Crewels / Embroideries, Linen
COLORS	DESIGN TYPES
Aqua / Teal	Embroidery, Check / Plaid
SCALE	RAILROADED
Small	Not Railroaded



WIDTH	VERTICAL REPEAT	HORIZONTAL REPEAT	CONTENT
55.00 in (139.70 cm)	1.00 in (2.54 cm)	1.00 in (2.54 cm)	Embroidery: 75% Cotton, 25% Sequins, Base: 100% Linen
BACKING	FIRE CODES	PRODUCT NUMBER	COUNTRY
	UFAC Class I / NFPA 260	6716601	India
CLEANING CODES			
S			

ADDITIONAL PRODUCT NOTES
Ca Tb 117-2013, Exclusive Pattern, Embroidered Textiles Are Not, Guaranteed For Precise Color, Matching And Colorfastness., Color Placement Of Embroidery, May Vary. All Measurements, Quoted For Repeats Are, Approximate.