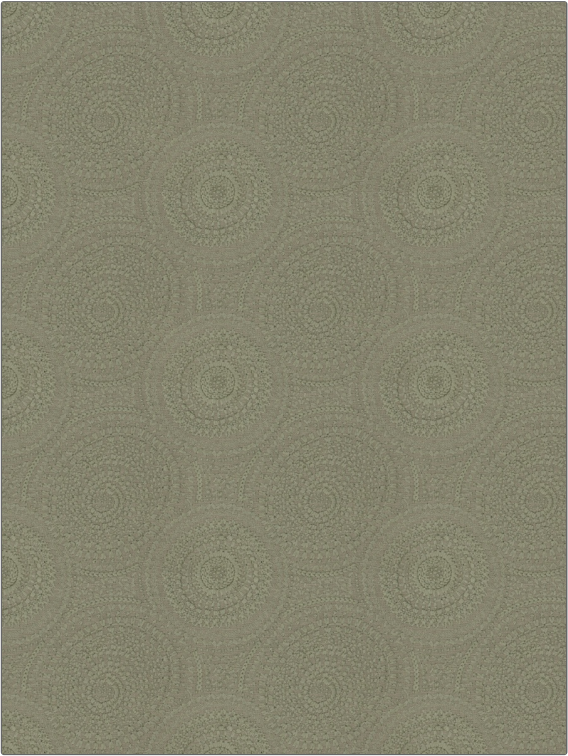


Fabric Product Details

PATTERN Drina Medallion
COLOR Thyme

| | |
|--|---|
| BRAND Stroheim | APPLICATION Fabric |
| USES Bedding, Drapery, Multipurpose | CATEGORIES Crewels / Embroideries, Linen |
| COLORS Green | DESIGN TYPES Embroidery, Medallion |
| SCALE Medium | RAILROADED Not Railroaded |



| | | | |
|--------------------------------------|--|---|---|
| WIDTH 55.00 in (139.70 cm) | VERTICAL REPEAT 9.25 in (23.50 cm) | HORIZONTAL REPEAT 10.40 in (26.42 cm) | CONTENT 55% Cotton, 45% Linen |
| BACKING | PRODUCT NUMBER 6717301 | COUNTRY India | CLEANING CODES S |

ADDITIONAL PRODUCT NOTES

Exclusive Pattern, Embroidered Textiles Are Not, Guaranteed For Precise Color, Matching And Colorfastness., Color Placement Of Embroidery, May Vary. All Measurements, Quoted For Repeats Are, Approximate.