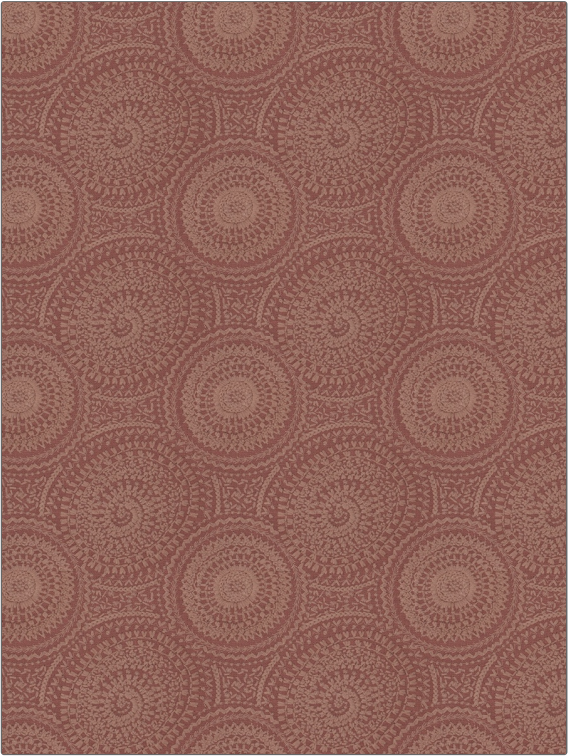


Fabric Product Details

| | |
|---------|-----------------|
| PATTERN | Drina Medallion |
| COLOR | 04 |

| | |
|-----------------------------------|----------------------------------|
| BRAND | APPLICATION |
| Stroheim | Fabric |
| USES | CATEGORIES |
| Bedding, Drapery, Multipurpose | Crewels / Embroideries, Linen |
| COLORS | DESIGN TYPES |
| Lavender / Purple, Pink | Embroidery, Medallion |
| SCALE | RAILROADED |
| Medium | Not Railroaded |



| | | | |
|----------------------|--------------------|---------------------|-----------------------|
| WIDTH | VERTICAL REPEAT | HORIZONTAL REPEAT | CONTENT |
| 55.00 in (139.70 cm) | 9.25 in (23.50 cm) | 10.40 in (26.42 cm) | 55% Cotton, 45% Linen |
| BACKING | PRODUCT NUMBER | COUNTRY | CLEANING CODES |
| | 6717404 | India | S |

| |
|---|
| ADDITIONAL PRODUCT NOTES |
| Exclusive Pattern, Embroidered Textiles Are Not, Guaranteed For Precise Color, Matching And Colorfastness., Color Placement Of Embroidery, May Vary. All Measurements, Quoted For Repeats Are, Approximate. |