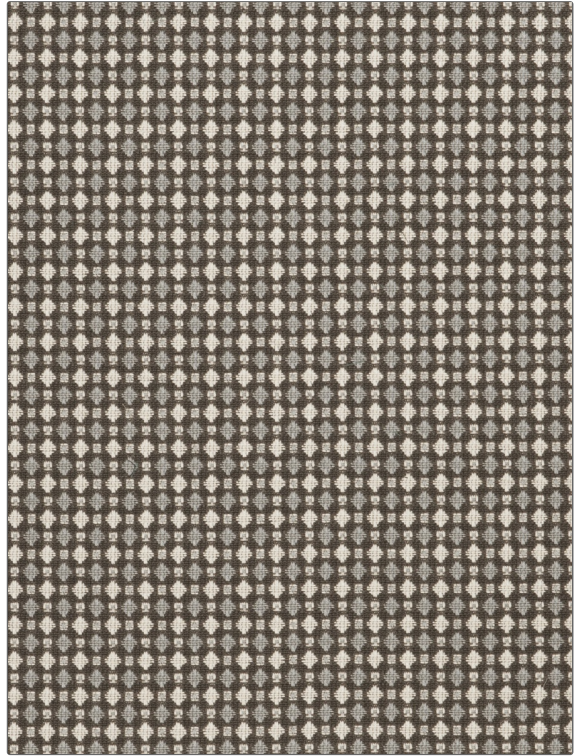


# Fabric Product Details

**PATTERN** Mulchatna  
**COLOR** 02

|                   |                        |
|-------------------|------------------------|
| <b>BRAND</b>      | <b>APPLICATION</b>     |
| <b>Stroheim</b>   | <b>Fabric</b>          |
| <b>USES</b>       | <b>CATEGORIES</b>      |
| <b>Upholstery</b> | <b>Linen</b>           |
| <b>COLORS</b>     | <b>DESIGN TYPES</b>    |
| <b>Brown</b>      | <b>Global / Ethnic</b> |
| <b>SCALE</b>      | <b>RAILROADED</b>      |
| <b>Small</b>      | <b>Not Railroaded</b>  |



|                             |                                |  |   |
|-----------------------------|--------------------------------|--|---|
| <b>WIDTH</b>                | <b>VERTICAL REPEAT</b>         | <b>HORIZONTAL REPEAT</b>                                 | <b>CONTENT</b>  |
| <b>55.00 in (139.70 cm)</b> | <b>0.75 in (1.90 cm)</b>       | <b>0.75 in (1.90 cm)</b>                                 | <b>38% Viscose, 29% Linen,<br/>28% Cotton, 5% Polyester</b> |
| <b>BACKING</b>              | <b>FIRE CODES</b>              | <b>DOUBLE RUBS</b>                                       | <b>PRODUCT NUMBER</b>                                       |
|                             | <b>UFAC Class I / NFPA 260</b> | <b>Exceeds 21,000 Double<br/>Rubs (Wyzenbeek Method)</b> | <b>6719902</b>  |
| <b>COUNTRY</b>              | <b>CLEANING CODES</b>          |  |   |
| <b>Italy</b>                | <b>S</b>                       |  |   |

**ADDITIONAL PRODUCT NOTES**

**Passes 27,000 Martindale Tst, Exclusive Pattern**