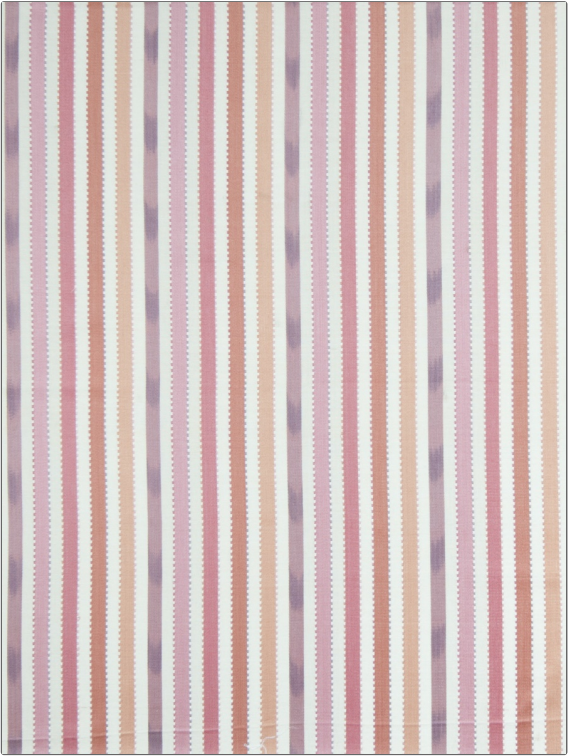


Fabric Product Details

PATTERN	Stanhope Stripe
COLOR	Cherry Blossom

BRAND	APPLICATION
Stroheim	Fabric
USES	CATEGORIES
Bedding, Multipurpose, Upholstery	Wovens
COLORS	DESIGN TYPES
Pink	Stripes
SCALE	RAILROADED
Medium	Not Railroaded



WIDTH	FINISH	VERTICAL REPEAT	HORIZONTAL REPEAT
54.00 in (137.16 cm)	Soil & Stain Repellent Finish	4.70 in (11.94 cm)	7.00 in (17.78 cm)
CONTENT	BACKING	FIRE CODES	PRODUCT NUMBER
100% Cotton		UFAC Class I, Passes NFPA 260	0680202
COUNTRY	CLEANING CODES		
India	S		

ADDITIONAL PRODUCT NOTES
Soil & Stain Repellent Finish, Exclusive Pattern