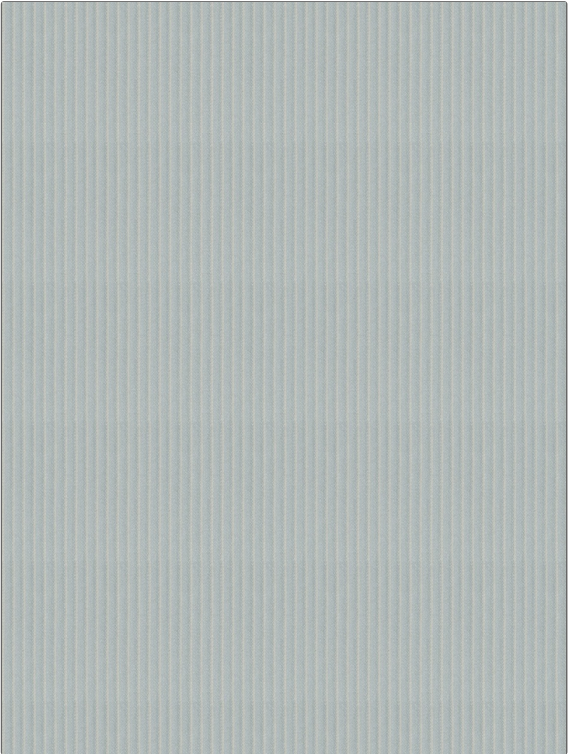


Fabric Product Details

PATTERN **Bautista**
COLOR **01**

| | |
|----------------------------|---------------------|
| BRAND | APPLICATION |
| Stroheim | Fabric |
| USES | CATEGORIES |
| Bedding, Upholstery | Wovens |
| COLORS | DESIGN TYPES |
| Light Blue | Solid |
| SCALE | RAILROADED |
| Small | Railroaded |



| | | | |
|-----------------------------|--|--------------------------|---|
| WIDTH | VERTICAL REPEAT | HORIZONTAL REPEAT | CONTENT |
| 54.00 in (137.16 cm) | 0.00 in (0.00 cm) | 0.25 in (0.64 cm) | 39% Rayon, 35% Egyptian Cotton, 24% Cotton, 2% Polyester |
| BACKING | DOUBLE RUBS | PRODUCT NUMBER | COUNTRY |
| | Exceeds 42,000 Double Rubs (Wyzenbeek Method) | 6814101 | USA |
| CLEANING CODES | | | |
| S | | | |

ADDITIONAL PRODUCT NOTES

Ca Tb 117-2013, Shown Railroaded