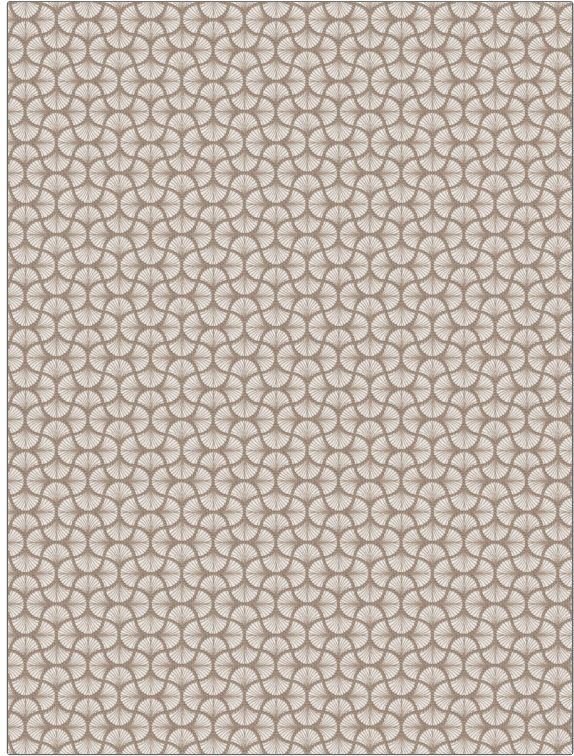


Fabric Product Details

PATTERN Donner
COLOR Ash Brown

BRAND	APPLICATION
Stroheim	Fabric
USES	CATEGORIES
Bedding, Drapery	Crewels / Embroideries
COLORS	DESIGN TYPES
Brown	Embroidery, Medallion
SCALE	RAILROADED
Small	Not Railroaded



WIDTH	VERTICAL REPEAT	HORIZONTAL REPEAT	CONTENT
54.00 in (137.16 cm)	3.00 in (7.62 cm)	3.00 in (7.62 cm)	Embroidery: 100% Cotton, Base: 100% Cotton
BACKING	FIRE CODES	DOUBLE RUBS	PRODUCT NUMBER
	UFAC Class I / NFPA 260	Exceeds 51,000 Double Rubs (Wyzenbeek Method)	6815401
COUNTRY	CLEANING CODES		
India	S		

ADDITIONAL PRODUCT NOTES

Exclusive Pattern, Embroidered Textiles Are Not, Guaranteed For Precise Color, Matching And Colorfastness., Color Placement Of Embroidery, May Vary. All Measurements, Quoted For Repeats Are, Approximate.